

2013 CATALOG






To Order Call: 1-800-321-5667

The following pages list complete specifications for Loos & Co. Inc.'s broad line of wire rope terminals, fittings, cutters and swaging tools.

How To Order:

Order by part number and dash number. It is helpful to give us the size of the wire rope the hardware is to fit. If you don't know the exact size, send a short sample with your order. Order standard packaged quantities where applicable. If no standard package shows, we will supply any quantity from one piece up. For details regarding warranties, credit, payment terms, and minimum billing, see **current Price List**.

Look for our trademarks to assure you are receiving quality products:

- All required MS fittings are trademarked: 
- All compression fittings are trademarked: Locoloc®
- All swaging tools are trademarked: Locoloc®
- All easily attached fittings are trademarked: Loos-Ends®
- All our products are trademarked: Cableware®

For all your Hardware and Tools needs call our sales staff at our Cableware® Division at:

1-800-321-LOOS (5667)

E-mail: sales@loosnaples.com / Web: www.loosnaples.com

Fax: 239-643-4558

NAPLES, FL USA

For all your Wire, Wire Rope, Cable and Assemblies, call our sales staff at our Pomfret, division at:

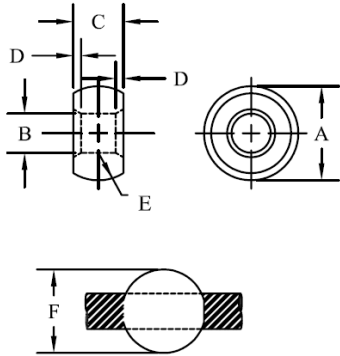
1-800-533-LOOS (5667)

E-mail: sales@loosco.com / Web: www.loosco.com

Fax: 860-928-6167

POMFRET, CT USA

WIRE ROPE TERMINALS

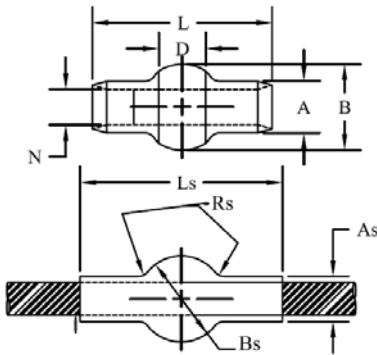


Plain Ball BA3

CORROSION RESISTANT STEEL

SPECIFICATIONS

MS Part No.	Cable Diameter	A	B	C	D	E	F Sphere Dia.	Min. Breaking Strength Lbs.	Lbs. per Piece
BA3-1*	1/32	.211 .208	.048 .045	.141 .137	.026 .016	.083 .073	.1905 .1875	88	.002
BA3-1.5*	3/64	.211 .208	.057 .053	.141 .137	.026 .016	.083 .073	.1905 .1875	215	.0019
BA3-2*	1/16	.211 .208	.076 .073	.141 .137	.026 .016	.083 .073	.1905 .1875	385	.0017
BA3-3*	3/32	.288 .284	.106 .102	.174 .170	.041 .031	.099 .089	.253 .250	735	.004
BA3-4*	1/8	.355 .351	.143 .139	.190 .184	.041 .031	.142 .132	.317 .312	1,200	.006
BA3-5*	5/32	.429 .425	.175 .171	.227 .222	.041 .031	.170 .160	.380 .375	1,680	.009
BA3-6*	3/16	.498 .493	.207 .203	.264 .259	.041 .031	.197 .187	.442 .437	2,520	.01
BA3-7*	7/32	.560 .555	.238 .233	.3025 .2975	.041 .031	.220 .210	.505 .500	2,800	.0143
BA3-8*	1/4	.629 .624	.269 .264	.3395 .3345	.050 .040	.247 .237	.567 .562	3,500	.0204

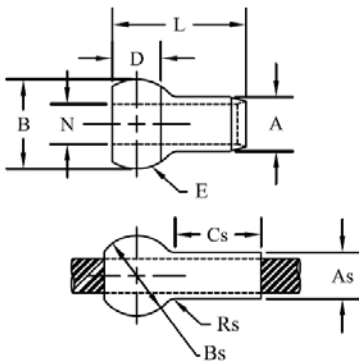


Double Shank Ball MS20663

CORROSION RESISTANT STEEL

SPECIFICATIONS

MS Part No.	Cable Dia.	A Dia.	As Dia.	B Dia.	Bs Spherical Dia.	D	L ±.0075	LS Ref.	N Dia.	Rs Ref Rad.	Lbs. Per Piece
MS20663C2*	1/16	.127	.112	.207	.190	.114	.362	.390	.073	.014	.0016
MS20663C3*	3/32	.163	.143	.277	.253	.152	.525	.578	.104	.019	.0032
MS20663C4*	1/8	.218	.190	.345	.315	.1895	.688	.765	.139	.023	.0094
MS20663C5*	5/32	.254	.222	.419	.379	.227	.850	.953	.169	.028	.0125
MS20663C6*	3/16	.293	.255	.487	.442	.264	1.012	1.140	.201	.033	.025
MS20663C7*	7/32	.347	.302	.555	.505	.3025	1.175	1.328	.233	.038	.032
MS20663C8*	1/4	.401	.348	.624	.567	.3395	1.337	1.515	.264	.042	.040
MS20663C9*	9/32	.439	.382	.694	.632	.3775	1.497	1.719	.297	.046	.042
MS20663C10*	5/16	.475	.413	.763	.694	.4145	1.664	1.875	.328	.046	.043



Single Shank Ball MS20664

CORROSION RESISTANT STEEL

SPECIFICATIONS

MS Part No.	Cable Dia.	A Dia.	As Dia.	B Dia.	Bs Spherical Dia.	Cs Ref	D Ref.	E Rad Ref	L	N Dia.	Rs Ref Rad	Lbs. Per Piece
664-C1.5*	3/64	.132	.112	.212	.160	.156	.114	.0825	.2685	.053	.014	.00132
MS20664C2*	1/16	.132	.112	.212	.190	.156	.114	.0825	.2685	.073	.014	.0012
MS20664C3*	3/32	.168	.143	.282	.253	.234	.152	.110	.384	.104	.019	.005
MS20664C4*	1/8	.223	.190	.350	.315	.313	.1895	.137	.500	.139	.023	.0075
MS20664C5*	5/32	.259	.222	.424	.379	.391	.2275	.165	.616	.169	.028	.01
MS20664C6*	3/16	.298	.255	.492	.442	.469	.2645	.192	.730	.201	.033	.015
MS20664C7*	7/32	.352	.302	.560	.505	.547	.3025	.220	.846	.233	.038	.025
MS20664C8*	1/4	.406	.348	.629	.567	.625	.3395	.247	.962	.264	.042	.03
MS20664C9*	9/32	.444	.382	.699	.632	.750	.3775	.275	1.078	.297	.046	.05
MS20664C10*	5/16	.480	.413	.768	.694	.813	.4145	.302	1.193	.328	.046	.066
664C12*	3/8	.553	.476	.906	.820	.935	.489	.357	1.425	.411	.061	.0874

Loos & Co., Inc. is a Qualified Producer (QPL) of MS Fittings and listed in QPL-781 & QPL-8878.

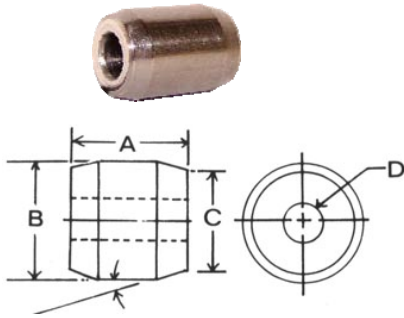
We also manufacture swaging equipment capable of swaging to meet MIL-DTL-781, MIL-DTL-6117 and MIL-SAEAS-10081.

*Denotes Stock Item.

Non-stock items subject to reasonable delivery, depending on current manufacturing lead time.

When ordering: Specify Part No. and diameter of cable hardware it is to fit.

WIRE ROPE TERMINALS



Also known as "Stop Buttons," "Sleeves," "Boeing Buttons," (Boeing Part No. BACT14A), these Stainless Steel Terminals have a multitude of uses. When properly applied, they will hold the breaking strength of the wire rope (except for 1x7 or 1x19 constructions).

Terminal, Cylindrical ST24

SPECIFICATIONS

MS Part No.	Cable Diameter	A	B	C	D	C = As	Die Size	Lbs. per Piece
ST24-2*	1/16	.224 .214	.221 .217	.190 .185	.076 .073	.190	3/32	.0019
ST24-3*	3/32	.333 .323	.252 .248	.219 .214	.107 .104	.219	1/8	.005
ST24-4*	1/8	.416 .406	.298 .294	.250 .245	.146 .141	.250	5/32	.0075
ST24-5*	5/32	.510 .500	.377 .373	.313 .308	.177 .172	.313	3/16	.01
ST24-6*	3/16	.635 .625	.439 .435	.375 .370	.208 .203	.375	7/32	.114

Minimum breaking strength of ST24 Terminals equals minimum breaking strength of flexible carbon steel wire rope conforming to Specification MIL-DTL-83420.

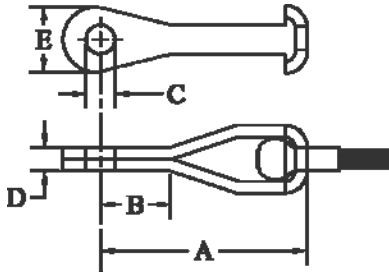
For swaging of these terminals, the dies for the next larger size AN/MS Standard Terminals are required.



STRAP EYES NAS1435-E

STRAP, EYE END
CORROSION RESISTANT STEEL

SPECIFICATIONS



MS Part No	Cable Dia.	A	B	C	D	E	F	Lbs. Per Piece
NAS1435E2*	1/16	1-1/16	.454	.188	.088	3/8	.093	.006
NAS1435E3*	3/32	1-1/2	.616	.188	.103	7/16	.108	.013
NAS1435E4*	1/8	1-5/8	.638	.188	.190	1/2	.195	.030
NAS1435E5*	5/32	1-15/16	.699	.250	.197	9/16	.202	.042
NAS1435E6*	3/16	2-3/16	.750	.313	.255	11/16	.260	.083

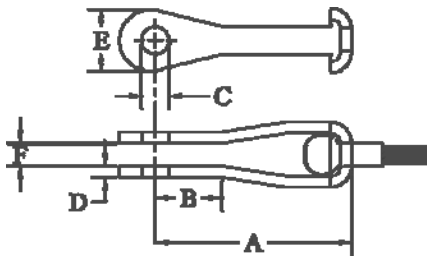
Also available in Commercial Grade (SP1 Series)



STRAP FORKS NAS1435-K

STRAP, FORK END
CORROSION RESISTANT STEEL

SPECIFICATIONS

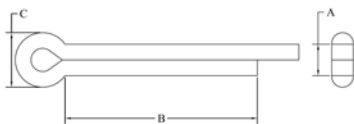


MS Part No	Cable Dia.	A	B	C	D	E	F	Lbs. Per Piece
NAS1435K2*	1/16	1-1/16	.454	.188	.042	3/8	.093	.006
NAS1435K3*	3/32	1-1/2	.616	.188	.049	7/16	.108	.013
NAS1435K4*	1/8	1-5/8	.638	.188	.093	1/2	.195	.030
NAS1435K5*	5/32	1-31/32	.699	.250	.096	9/16	.202	.042
NAS1435K6*	3/16	2-3/16	.750	.313	.125	11/16	.260	.083

Also available in Commercial Grade (SP2 Series)

Cotter Pin - PI5

CORROSION RESISTANT STEEL



Part No.	A	B	C
PI5-1*	.062	.75	1/8
PI5-2*	.093	1.00	3/16
PI5-3*	.125	1.250	1/4
PI5-4*	.156	1.625	3/8



*Denotes Stock Item.

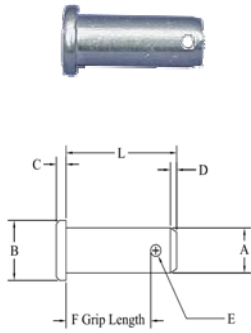
Non-stock items subject to reasonable delivery, depending on current manufacturing lead time. When ordering: Specify Part No. and diameter of cable hardware it is to fit.

WIRE ROPE TERMINALS

Clevis Pins P11

CORROSION RESISTANT STEEL

SPECIFICATIONS



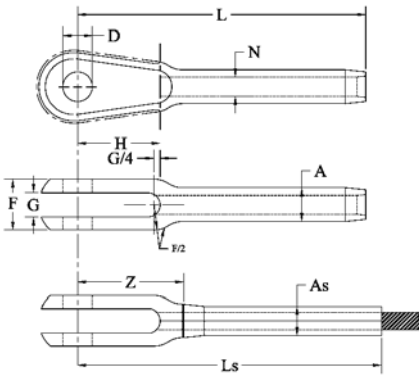
Part No.	Fits MS Nos. Indicated	Cable Diam.	A	B	C	D	E	L	F	Lbs. per Piece
P11-3*	MS20667-2	1/16	3/16	5/16	1/16	3/64	.081	7/16	5/16	.004
	MS20667-3	3/32	3/16	5/16	1/16	3/64	.081	7/16	5/16	.004
P11-4*	MS20667-4	1/8	3/16	5/16	1/16	3/64	.081	17/32	13/32	.005
P11-5*	MS20667-5	5/32	1/4	3/8	1/16	3/64	.089	17/32	13/32	.009
P11-6*	MS20667-6	3/16	5/16	7/16	1/16	3/64	.098	23/32	9/16	.017
P11-7*	MS20667-7	7/32	5/16	7/16	1/16	1/16	.098	27/32	11/16	.020
P11-8*	MS20667-8	1/4	3/8	1/2	3/32	1/16	.098	31/32	13/16	.033
P11-9*	MS20667-9	9/32	7/16	5/8	3/32	1/16	.1405	1-3/32	7/8	.040
P11-10*	MS20667-10	5/16	7/16	5/8	3/32	1/16	.1405	1-3/32	7/8	.040
P11-12*	MS20667-12	3/8	1/2	11/16	1/8	5/64	.172	1-1/8	31/32	.050
P11-14*	MS20667-14	7/16	9/16	23/32	1/8	5/64	.1405	1-7/32	1	.070
P11-16*	MS20667-16	1/2	5/8	13/16	1/8	5/64	.172	1-5/16	1-1/16	.127



Fork End MS20667

CORROSION RESISTANT STEEL

SPECIFICATIONS



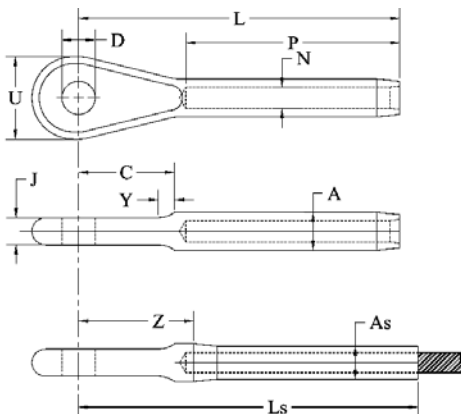
MS Part No.	Cable Dia.	A Dia.	As Dia.	D Dia.	F +.010 - .005	G	H	L +.020 - .000	Ls Ref.	N Dia.	Z Min.	Lbs. Per Piece
MS20667-2*	1/16	.160	.138	.190	.218	.093	.500	1.572	1.75	.078	.600	.01
MS20667-3*	3/32	.218	.190	.190	.254	.108	.670	1.945	2.06	.109	.750	.02
MS20667-4*	1/8	.250	.219	.190	.383	.195	.735	2.352	2.61	.141	.914	.0325
MS20667-5*	5/32	.297	.250	.250	.406	.202	.800	2.655	3.00	.172	.967	.05
MS20667-6*	3/16	.359	.313	.313	.543	.260	.880	3.071	3.24	.203	1.133	.09
MS20667-7*	7/32	.427	.375	.313	.625	.296	.970	3.440	3.74	.234	1.252	.15
MS20667-8*	1/4	.494	.438	.375	.688	.313	1.070	3.806	4.10	.265	1.368	.20
MS20667-9*	9/32	.563	.500	.438	.719	.327	1.170	4.120	4.48	.297	1.432	.30
MS20667-10*	5/16	.635	.563	.438	.765	.348	1.268	4.438	4.86	.328	1.500	.3812
MS20667-12*	3/8	.703	.625	.500	.830	.380	1.525	5.333	5.74	.390	1.895	.575
MS20667-14*	7/16	.781	.688	.562	.830	.380	1.776	6.102	6.57	.468	2.164	.775
MS20667-16*	1/2	.844	.750	.625	1.035	.473	1.903	6.938	7.50	.531	2.313	1.625
MS20667-18*	9/16	.984	.875	.750	1.241	.567	2.375	7.75	8.34	.594	2.81	2.14
MS20667-20	5/8	1.109	1.00	.875	1.351	.663	2.770	8.673	9.36	.656	3.23	2.66
MS20667-24	3/4	1.359	1.250	.875	1.451	.663	2.791	9.740	10.31	.781	3.30	2.85
MS20667-28	7/8	1.593	1.437	1.000	1.656	.756	3.170	10.802	11.56	.921	3.70	3.65
MS20667-32	1	1.812	1.625	1.125	1.864	.851	3.562	12.312	13.22	1.046	4.15	8.50



Eye End MS20668

CORROSION RESISTANT STEEL

SPECIFICATIONS



MS Part No.	Cable Dia.	A Diam.	As Dia.	C ±.020	D Dia.	J	L +.020 - .000	Ls. Ref.	N Dia.	P	U +.025 - .010	Y	Z Min.	Lbs. per Piece
MS20668-2*	1/16	.160	.138 +.000 - .005	.523	.190	.088	1.631	1.809	.078	1.042	.359	.072	.662	.009
MS20668-3*	3/32	.218	.190 "	.707	.190	.103	2.043	2.160	.109	1.261	.438	.092	.856	.018
MS20668-4*	1/8	.250	.219 "	.738	.190	.190	2.337	2.593	.141	1.511	.500	.103	.900	.035
MS20668-5*	5/32	.297	.250 "	.831	.250	.197	2.684	3.029	.172	1.761	.640	.131	.997	.050
MS20668-6*	3/16	.359	.313 "	.903	.313	.255	3.019	3.187	.203	2.011	.781	.155	1.082	.090
MS20668-7*	7/32	.427	.375 +.000 - .007	1.007	.313	.291	3.382	3.678	.234	2.261	.813	.187	1.195	.135
MS20668-8*	1/4	.494	.438 "	1.133	.375	.307	3.763	4.062	.265	2.511	.968	.221	1.326	.200
MS20668-9*	9/32	.563	.500 +.000 - .008	1.257	.438	.322	4.153	4.512	.297	2.761	1.109	.251	1.465	.250
MS20668-10*	5/16	.635	.563 "	1.373	.438	.343	4.546	4.969	.328	3.011	1.218	.281	1.609	.400
MS20668-12*	3/8	.703	.625 "	1.688	.500	.375	5.562	5.968	.390	3.511	1.500	.320	2.124	.575
MS20668-14*	7/16	.781	.688 "	1.968	.562	.375	6.398	6.867	.468	4.011	1.750	.350	2.460	.790
MS20668-16*	1/2	.844	.750 +.000 - .009	2.115	.625	.468	7.323	7.886	.531	4.698	1.875	.406	2.698	1.050
MS20668-18	9/16	.984	.875 "	2.625	.750	.562	8.185	8.778	.594	5.011	2.340	.450	3.247	2.00
MS20668-20	5/8	1.109	1.00 +.000 - .010	3.062	.875	.657	9.167	9.854	.656	5.511	2.730	.515	3.729	2.25
MS20668-24	3/4	1.359	1.25 +.000 - .012	3.093	.875	.657	10.328	10.900	.781	6.511	2.750	.600	3.890	2.50
MS20668-28	7/8	1.593	1.437 "	3.515	1.00	.750	11.530	12.290	.921	7.166	3.125	.675	4.437	3.50
MS20668-32	1	1.812	1.625 "	3.937	1.125	.844	13.156	14.062	1.046	8.229	3.510	.775	5.000	8.25

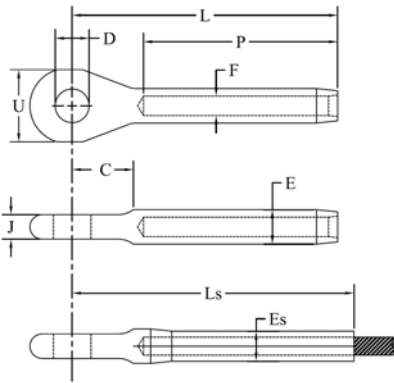
WIRE ROPE TERMINALS



Marine Eye EY1

CORROSION RESISTANT STEEL

SPECIFICATIONS



MS Part No.	Cable Dia.	C Ref	D +.010 -.010	E +.000 -.005	F +.007 -.003	J ± 1/32	L REF	P +.032 -.010	Max. U Ref.	After Swage Es +.000 -.009	After Swage Ls Ref.	Lbs. Per Piece
EY1-2X*	1/16	.500	.264	.160	.078	.218	1.500	1.063	.594	.138	1.809	.015
EY1-3X*	3/32	.500	.264	.218	.109	.218	1.58	1.188	.594	.190	2.070	.028
EY1-4X*	1/8	.500	.264	.250	.141	.218	2.088	1.500	.594	.219	2.401	.033
EY1-5X*	5/32	.580	.327	.297	.172	.281	2.355	1.688	.750	.250	2.709	.055
EY1-6X*	3/16	.710	.389	.359	.203	.359	2.750	2.000	.875	.313	3.147	.090
EY1-7X*	7/32	.800	.452	.427	.234	.406	3.220	2.313	1.000	.375	3.787	.150
EY1-8X*	1/4	.900	.514	.494	.265	.468	3.625	2.500	1.125	.438	4.282	.250
EY1-9X*	9/32	.990	.514	.563	.297	.468	3.795	2.688	1.125	.500	4.514	.330
EY1-10X*	5/16	1.080	.640	.635	.328	.593	4.495	3.250	1.375	.563	5.274	.500
EY1-12X*	3/8	1.150	.640	.703	.390	.593	4.930	3.500	1.375	.625	5.659	.670
EY1-14X*	7/16	1.24	.765	.781	.468	.719	5.375	4.125	1.438	.688	6.150	1.00
EY1-16X*	1/2	1.290	.890	.844	.531	.844	6.250	4.750	1.875	.750	7.187	1.25

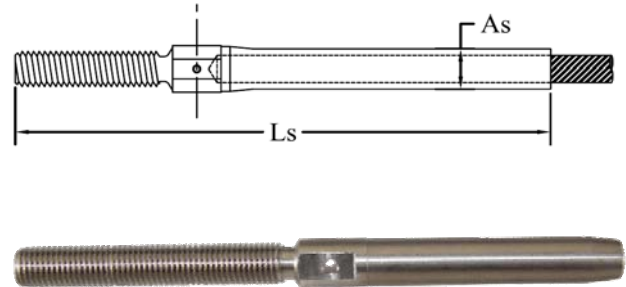
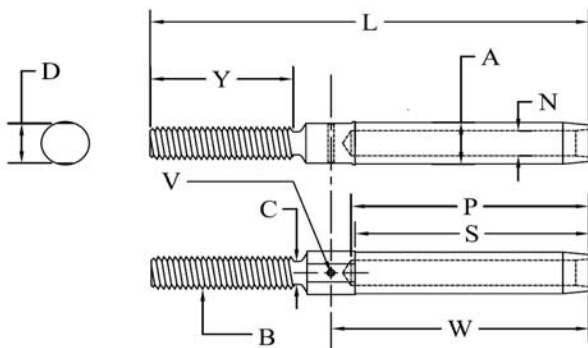
Stud MS21259 (AN666)

CORROSION RESISTANT STEEL

Be sure to specify RH or LH Thread

SPECIFICATIONS

MS Part No.		Cable Dia.	Thread B UN-3A UNF-3A	A Diam.	As Diam.	C Diam.	D	L ±.063	Ls Ref.	N Dia.	P	V +.005 -.000	S +.062 -.000	W ±.016	Y +.083 -.020	Lbs. Per Piece
RH Thread	LH Thread															
MS21259-2RH*	MS21259-2LH*	1/16	(# 6)-40	.160	.138	.121	.188	2.473	2.65	.078	1.042	.063	.969	1.174	1.045	.01
MS21259-3RH*	MS21259-3LH*	3/32	(# 10)-32	.218	.190	.169	.250	2.879	3.00	.109	1.261	.063	1.188	1.411	1.204	.0225
MS21259-4RH*	MS21259-4LH*	1/8	(1/4)-28	.250	.219	.226	.313	3.333	3.59	.141	1.511	.063	1.438	1.682	1.376	.0375
MS21259-5RH*	MS21259-5LH*	5/32	(1/4)-28	.297	.250	.226	.313	3.627	3.97	.172	1.761	.063	1.688	1.958	1.376	.0475
MS21259-6RH*	MS21259-6LH*	3/16	(5/16)-24	.359	.313	.285	.375	4.002	4.17	.203	2.011	.098	1.938	2.237	1.458	.08
MS21259-7RH*	MS21259-7LH*	7/32	(3/8)-24	.427	.375	.347	.438	4.516	4.81	.234	2.261	.098	2.188	2.518	1.625	.12
MS21259-8RH*	MS21259-8LH*	1/4	(3/8)-24	.494	.438	.347	.500	4.937	5.24	.265	2.511	.098	2.438	2.784	1.750	.165
MS21259-9RH*	MS21259-9LH*	9/32	(7/16)-20	.563	.500	.405	.625	5.391	5.75	.297	2.761	.098	2.688	3.076	1.875	.265
MS21259-10RH*	MS21259-10LH*	5/16	(1/2)-20	.635	.563	.467	.688	5.844	6.27	.328	3.011	.098	2.938	3.026	2.000	.375
MS21259-12RH*	MS21259-12LH*	3/8	(9/16)-18	.703	.625	.529	.750	6.656	7.06	.390	3.511	.098	3.438	3.828	2.250	.500
MS21259-14RH*	MS21259-14LH*	7/16	(5/8)-18	.781	.688	.592	.812	7.437	7.91	.468	4.011	.098	3.938	4.375	2.500	.625
MS21259-16RH*	MS21259-16LH*	1/2	(5/8)-18	.844	.750	.592	.875	8.187	8.75	.531	4.698	.125	4.625	5.093	2.500	.75
MS21259-18RH	MS21259-18LH	9/16	(3/4)-16	.984	.875	.717	1.000	9.125	9.72	.594	5.011	.125	4.938	5.468	3.000	1.00
MS21259-20RH	MS21259-20LH	5/8	(7/8)-14	1.109	1.000	.842	1.125	10.375	11.06	.656	5.511	.125	5.438	6.093	3.500	1.50
MS21259-24RH	MS21259-24LH	3/4	(1)-12	1.359	1.250	.967	1.437	12.063	12.64	.781	6.511	.125	6.438	7.188	4.000	2.75
MS21259-28RH	MS21259-28LH	7/8	(1 1/8)-12	1.593	1.437	1.092	1.625	13.226	13.99	.921	7.166	.125	7.094	7.846	4.500	3.90
MS21259-32RH	MS21259-32LH	1	(1 1/4)-12	1.812	1.625	1.217	1.875	14.969	15.88	1.046	8.229	.125	8.156	9.000	5.000	5.35



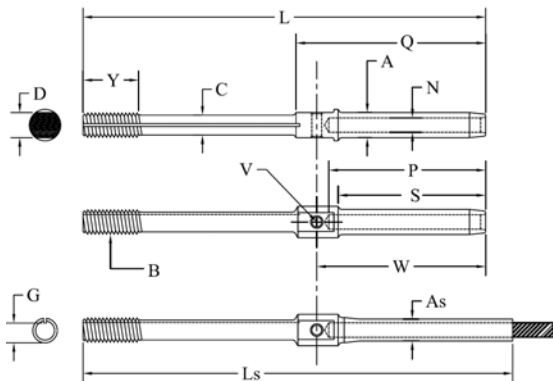
WIRE ROPE TERMINALS

Locking Stud MS21260

(AN669 / NAS650) CORROSION RESISTANT STEEL

SPECIFICATIONS

MS Part No.		Cable Dia.	Thread B UN-3A UNF-3A	A Diam.	As Diam.	C +.006 -.000 Diam.	D	G	
RH Thread	LH Thread							Max.	Min.
MS21260L2RH*	MS21260L2LH*	1/16	(# 6)-40	.160	.138	.092	.188	.1139	.1094
MS21260S2RH*	MS21260S2LH*	1/16	(# 6)-40	.160	.138	.092	.188	.1139	.1094
MS21260L3RH*	MS21260L3LH*	3/32	(# 10)-32	.218	.190	.133	.250	.1638	.1568
MS21260S3RH*	MS21260S3LH*	3/32	(# 10)-32	.218	.190	.133	.250	.1638	.1568
MS21260L4RH*	MS21260L4LH*	1/8	(1/4)-28	.250	.219	.195	.313	.2224	.2152
MS21260S4RH*	MS21260S4LH*	1/8	(1/4)-28	.250	.219	.195	.313	.2224	.2152
MS21260L5RH*	MS21260L5LH*	5/32	(1/4)-28	.297	.250	.195	.313	.2224	.2152
MS21260S5RH*	MS21260S5LH*	5/32	(1/4)-28	.297	.250	.195	.313	.2224	.2152
MS21260L6RH*	MS21260L6LH*	3/16	(5/16)-24	.359	.313	.245	.375	.2830	.2754
MS21260S6RH*	MS21260S6LH*	3/16	(5/16)-24	.359	.313	.245	.375	.2830	.2754
MS21260-7RH*	MS21260-7LH*	7/32	(3/8)-24	.427	.375	.306	.438	.3454	.3378
MS21260-8RH*	MS21260-8LH*	1/4	(3/8)-24	.494	.438	.306	.500	.3454	.3378
MS21260-9RH*	MS21260-9LH*	9/32	(7/16)-20	.563	.500	.361	.625	.4052	.3972
MS21260-10RH*	MS21260-10LH*	5/16	(1/2)-20	.635	.563	.406	.688	.4678	.4597
MS21260-12RH*	MS21260-12LH*	3/8	(9/16)-18	.703	.625	.476	.750	.5285	.5201
MS21260-14RH	MS21260-14LH	7/16	(5/8)-18	.781	.688	.538	.812	.5909	.5826
MS21260-16RH	MS21260-16LH	1/2	(5/8)-18	.844	.750	.538	.875	.5909	.5826
MS21260-18RH	MS21260-18LH	9/16	(3/4)-16	.984	.875	.654	1.000	.7137	.7050
MS21260-20RH	MS21260-20LH	5/8	(7/8)-14	1.109	1.000	.768	1.125	.8558	.8266
MS21260-24RH	MS21260-24LH	3/4	(1)-12	1.359	1.25	.893	1.438	.9608	.9516
MS21260-28RH	MS21260-28LH	7/8	(1 1/8)-12	1.593	1.437	1.002	1.625	1.0819	1.0772
MS21260-32RH	MS21260-32LH	1	(1 1/4)-12	1.812	1.625	1.128	1.875	1.2069	1.1972



CORROSION RESISTANT STEEL

Dash Number Size	L ±.063	Ls (Ref)	N Diam.	P	Q +.031 -.016	V ±.005	S +.062 -.000	W ±.016	Y ±.047	Lbs. per Piece
L2*	3.491	3.67	.078	1.042	1.319	.063	.969	1.174	.375	.011
S2*	2.616	2.79	.078	1.042	1.319	.063	.969	1.174	.375	.01
L3*	3.738	3.86	.109	1.261	1.581	.063	1.188	1.411	.500	.024
S3*	2.863	2.98	.109	1.261	1.581	.063	1.188	1.411	.500	.020
L4*	4.020	4.28	.141	1.511	1.863	.098	1.438	1.682	.563	.040
S4*	3.145	3.40	.141	1.511	1.863	.098	1.438	1.682	.563	.0236
L5*	4.314	4.66	.172	1.761	2.157	.098	1.688	1.958	.625	.05
S5*	3.439	3.78	.172	1.761	2.157	.098	1.688	1.958	.625	.044
L6*	4.612	4.78	.203	2.011	2.455	.098	1.938	2.237	.750	.086
S6*	3.737	3.90	.203	2.011	2.455	.098	1.938	2.237	.750	.070
-7*	4.914	5.21	.234	2.261	2.757	.098	2.188	2.518	.875	.130
-8*	5.218	5.52	.265	2.511	3.061	.098	2.438	2.784	.875	.170
-9*	5.542	5.90	.297	2.761	3.385	.098	2.688	3.076	1.00	.22
-10*	5.875	6.30	.328	3.011	3.718	.098	2.938	3.326	1.00	.35
-12*	6.608	7.01	.390	3.511	4.281	.098	3.438	3.828	1.125	.50
-14	7.468	7.94	.468	4.011	4.812	.098	3.938	4.375	1.250	.625
-16	8.718	9.28	.531	4.698	5.562	.125	4.625	5.093	1.250	.750
-18	9.188	9.78	.594	5.011	6.000	.125	4.938	5.468	1.500	1.00
-20	10.469	11.16	.656	5.511	6.750	.125	5.438	6.093	1.750	1.50
-24	12.188	12.76	.781	6.511	7.938	.125	6.438	7.188	2.000	2.75
-28	12.851	13.61	.921	7.166	8.601	.125	7.094	7.846	2.000	3.90
-32	14.624	15.53	1.046	8.229	9.844	.125	8.156	9.000	2.250	5.35



*AN669 same as MS21260 but without slotted end

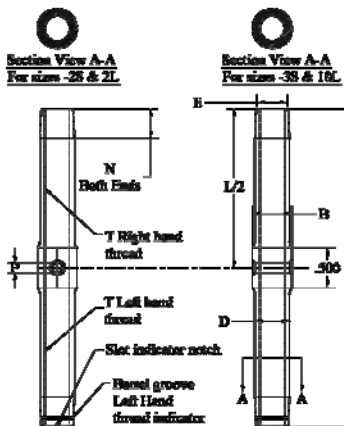
*Denotes Stock Item. Non-stock items subject to reasonable delivery, depending on current manufacturing lead time. When ordering: Specify Part No. and diameter of cable hardware it is to fit.

WIRE ROPE TERMINALS

Turnbuckle Body MS21251 CLIP LOCKING (Same as NAS649)

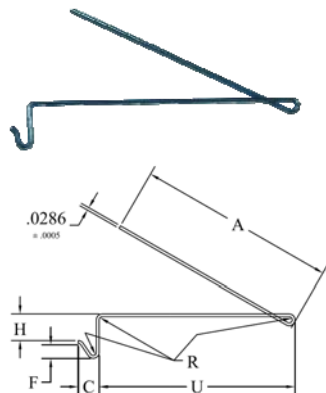


AVAILABLE IN BRASS, STEEL & ALUMINUM BY REQUEST.



DASH No.			Wire Rope Dia. Ref.	Min. Breaking Strength	Thread T UNF-38	L ± .031	B ±.005 Dia.	N ± .031	D ±.005 Dia.	E ±.005 Dia.	P ±.005	Applicable locking Clip	Lbs. per Piece
Steel	Brass	Alum.											
-2S*	B2S*	A2S*	1/16	800	No. 6-40	2.25	.250	.156	.219	.188	.125	-1	.018
-2L	B2L*	A2L*				4.000						-2	.034
-3S*	B3S*	A3S*	3/32	1600	No. 10-32	2.250	.344	.188	.281	.250	.125	-1	.031
-3L*	B3L*	A3L*				4.000						-2	.50
-5S*	B5S*	A5S*	5/32	3200	1/4-28	2.250	.438	.312	.391	.328	.125	-1	.052
-5L*	B5L*	A5L*				4.000						-2	.097
-6S	B6S*	A6S*	3/16	4600	5/16-24	2.250	.500	.375	.438	.406	.188	-1	.063
-6L	B6L*	A6L*				4.000						-2	.106
-8L*	B8L*	A8L	1/4	8000	3/8-24	4.000	.625	.500	.594	.469		-2	.109
-9L	B9L	A9L	9/32	12500	7/16-20	4.25	.750	.594	.688	.563		-3	.296
-10L	B10L	A10L	5/16	17500	1/2-20		.875	.656	.813	.625		-3	.413

Brass turnbuckle bodies available nickel plated for marine applications.



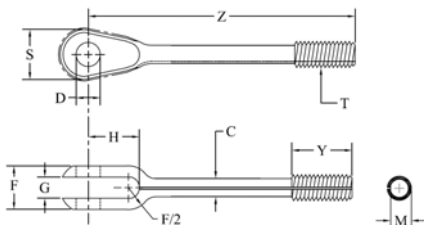
Clip, Locking Turnbuckle MS21256 (Same as NAS651)

CORROSION RESISTANT STEEL

DASH No.	A	B	C ^{+0.010} _{-.015}	D	F	G	H	R RAD	Lbs. per 1000
-1*	.965	1.115	.150	1.078	.125	.300	.165	.032	.466
-2*	1.87	2.000		1.955		.315	.180		.759
-3*	2.04	2.140	.215	2.015	.150	.430	.275		.905

MS21252C 17-4PH Stainless Steel (Same as NAS645) (Replaces AN161)

ALSO AVAILABLE IN 4130 HT-CADMIUM PLATED



DASH No. direction of Thread		J Wire Rope Dia. Ref.	Min. Breaking Strength	Thread T UNF-3A	C ^{+0.006} _{-.000}	D ^{+0.002} _{-.000} Dia.	F ^{+0.010} _{-.005}	G ^{+0.010} _{-.000} Dia.	H	K Max	M		S Spher Dia.	Y ±.047	Z ±.047
RH	LH										Max	Min			
2RS*	2LS*	1/16	800	No.6-40	.094	.190	.250	.109		.0096	.1139	.1094	.375	.375	1.500
3RS*	3LS*	3/32	1600	No. 10-32	.133	.190	.319	.156	.531	.0077	.1638	.1568	.500	.500	1.625
3RL*	3LL*														2.500
4RS*	4LS*	1/8	2200	1/4-28	.189	.190	.383	.195	.531	.0103	.2224	.2152	.547	.563	1.844
4RL*	4LL*	1/8	2200	1/4-28	.189	.190	.383	.195	.531	.0103	.2224	.2152	.547	.563	2.734
5RS*	5LS*	5/32	3200	1/4-28	.189	.250	.452	.218	.531	.0103	.2224	.2152	.641	.625	1.844
5RL*	5LL*														2.734
6RS*	6LS*	3/16	4600	5/16-24	.243	.313	.547	.250	.656	.0064	.2830	.2754	.734	.750	2.031
6RL*	6LL*														2.906
8RL*	8LL*	1/4	8000	3/8-24	.306	.375	.687	.312	.875	.0057	.3454	.3378	.922	.875	3.1883
9RL	9LL	9/32	12500	7/16-20	.362	.438	.750	.375	1.00	.0056	.4052	.3972	1.094		3.438
10RL*	10LL*	5/16	17500	1/2-20	.425	.500	.844	.437	1.188	.0058	.4678	.4597	1.219	1.00	3.688

*Denotes Stock Item.
When ordering: Specify Part No. and diameter of cable hardware it is to fit.

WIRE ROPE TERMINALS

MS21254C 17-4PH STAINLESS STEEL

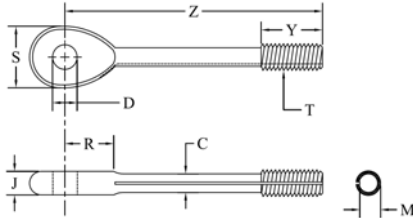
ALSO AVAILABLE IN 4130 HT-CADMIUM PLATED

(Same as NAS648) (Replaces AN165)



MS21254

NOTE: Use Dash -5 parts with 1/8" diameter wire rope

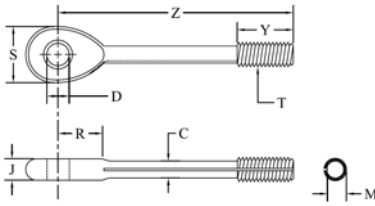


DASH No. direction of Thread		J Wire Rope Dia. Ref.	Min. Breaking Strength	Thread T UNF-3A	C +.006 -0.000	D +.002 -0.000 Dia.	J ± .005	M		N Max	Y ±.047	Z +.031 -.015
RH	LH							Max	Min			
2RS*	2LS*	1/16	800	No. 6-40	.094	.190	.125	.1139	.1094	.0096	.375	1.500
2RL*	2LL*											2.375
3RS*	3LS*	3/32	1600	No. 10-32	.133	.190	.188	.1638	.1568	.0077	.500	1.625
3RL*	3LL*											2.500
5RS*	5LS*	5/32	3200	1/4-28	.189	.250	.219	.2224	.2152	.0103	.625	1.750
5RL*	5LL*											2.625
6RS*	6LS*	3/16	4600	5/16-24	.243	.313	.281	.2830	.2754	.0064	.688	1.875
6RL*	6LL*											2.750
8RL*	8LL*	1/4	8000	3/8-24	.306	.375	.328	.3454	.3378	.0057	.875	2.875
9RL	9LL	9/32	12500	7/16-20	.362	.438	.375	.4052	.3972	.0056	1.063	3.375
10RL*	10LL*	5/16	17500	1/2-20	.500	.500	.469	.4678	.4597	.0058	1.188	3.625

MS21255C 17-4PH STAINLESS STEEL

ALSO AVAILABLE IN 4130 HT-CADMIUM PLATED

(Same as NAS647) (Replaces AN170)

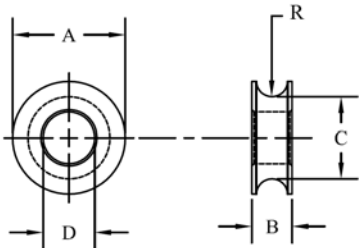


Dash No. Direction of Thread		Cable Dia.	Min Breaking Strength LB	Thread T UNF-3A	A +.010 -.000 Diam.	B Max	C +.006 -.000	D ±.031	J ±.005	M		S Dia.	Y ±.047	Z +.031 -.015
RH	LH									Max	Min			
2RS*	2LS*	1/16	800	6 - 40	.188	.0096	.094	.325	.125	.1139	.1094	.375	.375	1.500
2RL*	2LL*													2.375
3RS*	3LS*	3/32	1600	10 - 32	.219	.0077	.133	.416	.188	.1638	.1568	.500	.500	1.625
3RL*	3LL*													2.500
5RS*	5LS*	5/32	3200	1/5 - 28	.281	.0103	.189	.512	.219	.2224	.2152	.625	.625	1.750
5RL*	5LL*													2.625
6RS*	6LS*	3/16	4600	5/16 - 24	.313	.0064	.243	.527	.281	.2830	.2754	.688	.750	1.875
6RL*	6LL*													2.750
8RL	8LL	1/4	8000	3/8 - 24	.375	.0057	.306	.678	.328	.3454	.3378	.875	.875	2.875
9RL	9LL	9/32	12500	7/16 - 20	.469	.0056	.362	.831	.375	.4052	.3972	.1063	1.000	3.375
10RL	10LL	5/16	17500	1/2 - 20	.563	.0058	.425	.900	.469	.4678	.4597	1.188		3.625



CABLE BUSHING SPECIFICATIONS

AN111 - Corrosion Resistant Steel

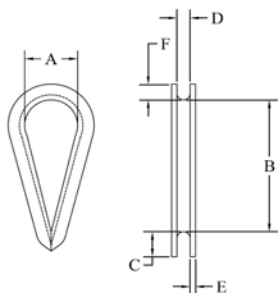


PART #	Cable Diameter	A Dia.	B +/-	C Dia.	D +/-	R Rad. +/-
AN111-C3*	1/16, 3/32	.437	.156	.343	.187	.046
AN111-C4*	1/8	.468	.187	.343	.187	.062
AN111-C5*	5/32	.562	.218	.406	.250	.078
AN111-C6*	3/16	.687	.250	.500	.312	.093

*Denotes Stock Item.

When ordering: Specify Part No. and diameter of cable hardware it is to fit.

WIRE ROPE TERMINALS

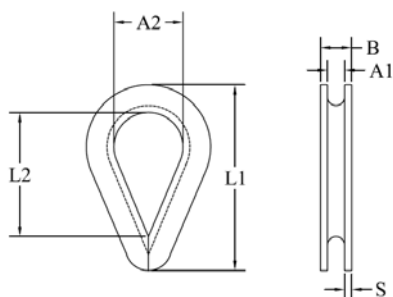


AN100 THIMBLES

Cold Rolled Steel Zinc Plated	Stainless Steel Part No.	To fit Cable Dia.	A	B	Dimensions				Wt. Per 1,000
					C	D	E	F	
AN100-3*	AN100-C3*	3/64, 1/16, 5/64, 3/32	.350	43/64	3/16	3/32	.032	5/64	1.5
AN100-4*	AN100-C4*	3/32, 7/64, 1/8	.350	45/64	7/32	9/64	.032	5/64	4.3
AN100-5*	AN100-C5*	5/32	.400	51/64	7/32	11/64	.032	7/64	6
AN100-6*	AN100-C6*	3/16	.500	1	5/16	13/64	.032	11/64	9.8
AN100-8*	AN100-C8*	7/32, 1/4	.700	1-13/32	13/32	17/64	.032	11/64	15
AN100-10	AN100-C10*	9/32, 5/16	.900	1-51/64	7/16	21/64	.040	7/32	35
AN100-12*	AN100-C12*	3/8	1.000	2	5/8	25/64	.060	17/64	85

AN thimbles come in either cold-rolled steel (zinc plated) or stainless steel (natural finish). Fit cable diameters from 1/16" to 3/8" to meet the most demanding marine, aircraft or industrial requirements.

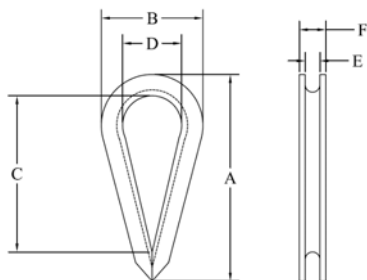
HEAVY DUTY STAINLESS STEEL THIMBLES (Type 316)



NOTE: EY18-3 will fit 1/16" Wire Rope, EY18-6 will fit 7/32" Wire Rope

Part No.	To Fit Cable Dia.	A1	A2	B	L1	L2	Thickness Comparison		Weight Each and Comparison	
							Heavy Duty (S)	AN Type (E)	Heavy Duty	AN Type
EY18-3*	3/32	1/8	3/8	3/16	7/8	5/8	1/32	1/32	.41	.36
EY18-4*	1/8	5/32	3/8	7/32	1	11/16	1/32	1/32	.65	.43
EY18-5*	5/32	3/16	7/16	9/32	1 1/8	3/4	3/64	1/32	1.16	.57
EY18-6*	3/16	7/32	1/2	5/16	1 1/4	7/8	3/64	1/32	1.45	.99
EY18-8*	1/4	9/32	19/32	3/8	1 1/2	1 1/6	1/16	1/32	2.51	1.61
EY18-9*	9/32	5/16	3/4	7/16	1 3/4	1 1/4	1/16	1/32	4.52	3.23
EY18-10*	5/16	3/8	7/8	1/2	2	1 1/2	5/64	3/64	5.72	3.23
EY18-12*	3/8	7/16	15/16	9/16	2 5/16	1 3/4	5/64	3/64	7.11	7.93
EY18-16*	1/2	9/16	1 1/8	3/4	2 3/4	2 1/8	3/32	1/16	14.01	-

STANDARD GALVANIZED WIRE ROPE THIMBLES



Dimensions are approximate.

Part No.	Cable Dia.	A	B	C	D	F	E	Wt. Lbs. per
EY411-4*	1/8	2	1-1/8	1-3/8	5/8	9/32	5/32	3.5
EY411-6*	3/16	2	1-1/8	1-3/8	5/8	11/32	1/4	3.5
EY411-8*	1/4	2	1-1/8	1-7/16	11/16	3/8	5/16	3.5
EY411-10*	5/16	2-1/8	1-1/4	1-1/2	13/16	15/32	3/8	5
EY411-12*	3/8	2-3/8	1-1/2	1-11/16	1	17/32	7/16	7
EY411-14/16*	7/16, 1/2	2-11/16	1-3/4	1-15/16	1-1/8	11/16	9/16	13
EY411-18/20*	9/16, 5/8	3-1/2	2-3/8	2-1/4	1-7/16	15/16	11/16	35
EY411-24*	3/4	3-3/4	2-3/4	2-11/16	1-5/8	1-1/8	13/16	50
EY411-28*	7/8	5	3-1/8	3-9/16	1-7/8	1-9/32	1	88
EY411-32*	1	5-3/4	3-11/16	4-1/4	2-1/2	1-13/32	1-1/8	104

*Denotes Stock Item.

Non-stock items subject to reasonable delivery, depending on current manufacturing lead time.

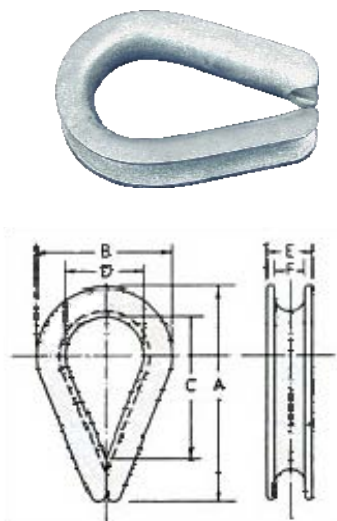
When ordering: Specify Part No. and diameter of cable hardware it is to fit.



CABLEWARE® DIVISION 901 Industrial Blvd.
Naples, Florida 34104 • 239-643-5667
1-800-321-LOOS (5667) FAX: 239-643-4558
Web: www.loosnaples.com • E-mail: sales@loosnaples.com

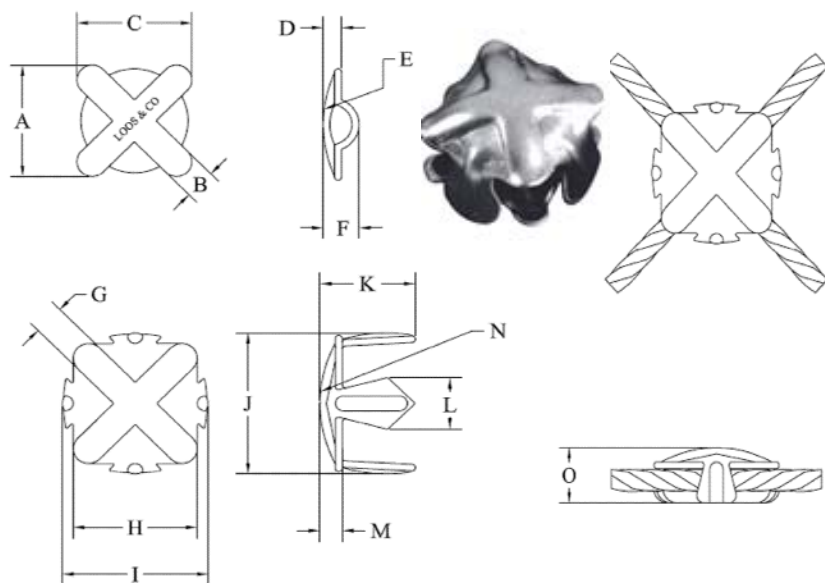
WIRE ROPE TERMINALS

HEAVY DUTY GALVANIZED WIRE ROPE THIMBLES



Part No.	Cable Dia.	A	B	C	D	E	F	Wt. Lbs. per 100
EY414-8*	1/4	2-1/4	1-1/2	1-5/8	7/8	15/32	5/16	8
EY414-10*	5/16	2-5/8	1-13/16	1-7/8	1-1/16	17/32	3/8	14
EY414-12*	3/8	3	2-1/8	2-1/8	1-1/8	21/32	7/16	25
EY414-14*	7/16	3-1/2	2-3/8	2-5/16	1-1/4	3/4	1/2	36
EY414-16*	1/2	3-5/8	2-3/4	2-3/4	1-1/2	15/16	9/16	51
EY414-18*	9/16	3-5/8	2-11/16	2-3/4	1-1/2	15/16	5/8	51
EY414-20*	5/8	4-1/4	3-1/8	3-1/4	1-3/4	1-1/32	11/16	75
EY414-24*	3/4	5	3-13/16	3-3/4	2	1-1/4	13/16	147
EY414-28*	7/8	5-1/2	4-1/4	4-1/4	2-1/4	1-7/16	1	185
EY414-32*	1	6-1/8	4-15/16	4-1/2	2-1/2	1-11/16	1-1/8	300

WIRE ROPE NET CLIP — CP3



NET CLIPS were designed specifically for use on steel cables. They are used by the U.S. Navy and Coast Guard to fabricate safety nets and have found wide acceptance whenever wire rope nets are needed. The one size available will accept "cross-overs" of 7x7 or 7x19 construction cable in unjacketed cable diameters of 5/32, 3/16, 7/32, and 1/4. Net clips are available in Stainless Steel.

Order by part number.

Part No.	Description	Wt. per M sets
CP3-2*	Stainless Steel Net Clip	44.5 lbs.

A	B	C	D	E	F	G	H	I	J	K	L	M	N	O
15/16	1/4	15/16	3/16	1-1/8R	9/32	1/4	15/16	1-3/16	1-3/16	3/4	7/16	3/16	1-1/8R	1/2

TOOL TO APPLY NET CLIPS

PART NO. #1-N

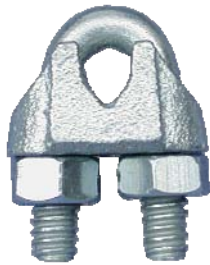


- Weights 12 lbs.
- Base is 3-1/2" Diameter x 4" H.
- Overall height 8"

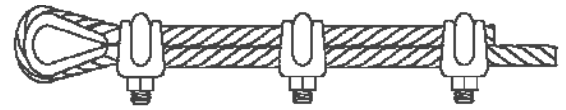
*Denotes Stock Item.
Non-stock items subject to reasonable delivery, depending on current manufacturing lead time.
When ordering: Specify Part No. and diameter of cable hardware it is to fit.

WIRE ROPE TERMINALS

MALLEABLE WIRE ROPE CLIPS/GALVANIZED



Recommended			
Part Number	To Fit Cable Dia.	To give Maximum Strength	Estimated Weight per 100 in lbs.
CP2-4P*	1/8	2	3.0
CP2-6P*	3/16	2	6.0
CP2-8P*	1/4	3	12.7
CP2-10P*	5/16	3	13.2
CP2-12P*	3/8	4	20.4
CP2-14P*	7/16	4	22.0
CP2-16P*	1/2	4	35.0



Right Way

Malleable, galvanized wire rope clips. Standard clips are designed for maximum holding strength. Heavy duty construction throughout. For in between sizes such as 5/32", 7/32", etc., use next larger size clip.

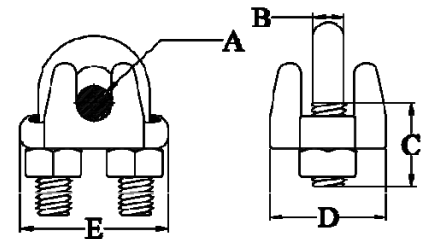
Wire rope clips of the type on this page are not to be used on a plastic coated cable without first stripping off plastic. Wire rope clips must be installed over bare cable only.

WIRE ROPE CLIPS/STAINLESS

(Available in type 304 or 316)



(Ref. dimensions in Inches except Nut Size)						
Part No	A	B	C	D	E	Weight Per 100 pcs.
CP7-2*	1/16, 3/32	.09	.40	.52	.55	2
CP7-4*	1/8	.12	.43	.55	.62	2
CP7-5*	5/32	.15	.56	.70	.73	4
CP7-6*	3/16	.19	.67	.78	.87	6
CP7-8*	7/32, 1/4	.23	.75	.84	1.11	9
CP7-10*	9/32, 5/16	.31	.90	1.06	1.34	1.7
CP7-12*	3/8	.38	1.00	1.32	1.74	3.6



Rugged Stainless Steel Saddles with grooved deep recess to hold cable securely. Stainless Steel U Bolt and Nuts. Use Clips as recommended above (under Malleable Clips) to give maximum strength.

NOTE: THE NUTS ON THESE CLIPS ARE METRIC SIZES!

STAINLESS STEEL SAFETY/LOCKING WIRE

Used for aircraft to secure all bolts, nuts, or hardware subject to vibrations. Better than a cotter pin, a thousand uses around the home, farm or factory. Always available from stock in these popular sizes and packages.

Part No.	Ft. per Spool	Lbs. per Spool
SLWQ020*	234.5	1/4
SLWQ032*	91.5	
SLWQ041*	55.75	
SLW020*	937	1
SLW032*	366	
SLW041*	223	
SLW10-020*	9370	10
SLW10-032*	3660	
SLW10-041*	2230	

Dimensions are approximate.

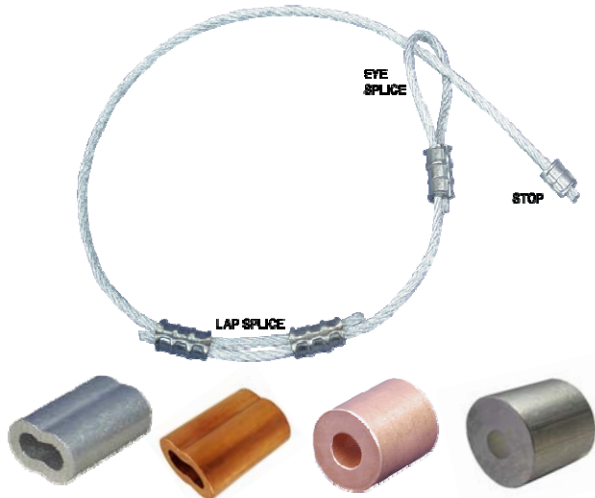


TYPE 302/304 STAINLESS STEEL - CONDITION A
MEETS MIL SPEC. MS20995 & GOVT. SPEC. QQW-423

*Denotes Stock Item.
Non-stock items subject to reasonable delivery, depending on current manufacturing lead time.
When ordering: Specify Part No. and diameter of cable hardware it is to fit.

SPECIFICATIONS: CONFORMS TO MIL. SPEC. MS51844

TO FIT CABLE DIA.		ALUMINUM OVAL SLEEVES	COPPER OVAL SLEEVES	COPPER OVAL SLEEVES ZINC PLATED	COPPER OVAL SLEEVES TIN PLATED	ALUMINUM STOP SLEEVES	COPPER STOP SLEEVES
1/32	Part No.	Available in Copper Only	SL2-1	SL2-1P	SL2-1TP	Available in Copper Only	ST2-1
	Use Tool No.		000-WCI, #1-3-SBHS or #4-H				000-WCI or #4
	Wgt. Lbs. M/Pcs.		.6	.6	.6		.8
3/64	Part No.	SL1-1.5	SL2-1.5	SL2-1.5P	SL2-1.5TP	Available in Copper Only	ST2-1.5
	Use Tool No.	000-WCI, 0-1.5-3FS, #1-3-SBHS, 0-3/64SC or #4-H					000-WCI, 0-1.5-3FS, 0-3/64SC or #4-H
	Wgt. Lbs. M/Pcs.	.6	2	2	2		1.5
1/16	Part No.	SL1-2	SL2-2	SL2-2P	SL2-2TP	ST1-2	ST2-2
	Use Tool No.	000-WCI, 0-1.5-3FS, #1-3-SBHS, 0-1/16SC, HS-02-R, #1-SC, #1-BSC, #1-P or #4-H				000-WCI or #4-H	
	Wgt. Lbs. M/Pcs.	.8	2.5	2.5	2.5	.4	2
3/32	Part No.	SL1-3	SL2-3	SL2-3P	SL2-3TP	0-1.5-3-FS, 0-3/32SC, #1-SC, #1-BSC, #1-P or #4-H	ST2-3
	Use Tool No.	0-1.5-3FS, 0-3/32SC, #1-3-SBHS, #1-SC, #1-P, #1-BSC, HS-02-R or #4-H					0-1.5-3-FS, 0-3/32SC, #1-SC, #1-BSC, #1-P or #4-H
	Wgt. Lbs. M/Pcs.	2.5	6	6	6		2.5
1/8	Part No.	SL1-4	SL2-4	SL2-4P	SL2-4TP	ST1-4	ST2-4
	Use Tool No.	0-1/8SC, #1-SC, #1-BSC, #1-P, HS-02-R or #4-H				0-1.5-3FS, 0-3/32SC, #1-SC, #1-BSC, #1-P or #4-H	
	Wgt. Lbs. M/Pcs.	5.8	16	16	16	2.3	7
5/32	Part No.	SL1-5	SL2-5	SL2-5P	SL2-5TP	ST1-5	ST2-5
	Use Tool No.	0-5/32SC, #1-SC, #1-BSC, #1-P or #4-H				0-1/8SC, #1-SC, #1-BSC, #1-P or #4-H	
	Wgt. Lbs. M/Pcs.	7	23	23	23	4	12
3/16	Part No.	SL1-6	SL2-6	SL2-6P	SL2-6TP	ST1-6	ST2-6
	Use Tool No.	0-3/16SC, #1-SC, #1-BSC, #1-P, HS-02-R or #4-H				0-1/8SC, #1-SC, #1-BSC, #1-P or #4-H	
	Wgt. Lbs. M/Pcs.	14.5	53	53	53	3.5	10.5
7/32	Part No.	SL1-7	SL2-7	SL2-7P	SL2-7TP	ST1-7	ST2-7
	Use Tool No.	0-7/32, HS-02-R, #2-H or #4-H				0-1/8SC, #1-SC, #1-BSC, #1-P, #2 or #4-H	
	Wgt. Lbs. M/Pcs.	21	45.5	46	46	6.7	18.6
1/4	Part No.	SL1-8	SL2-8	SL2-8P	SL2-8TP	ST1-8	ST2-8
	Use Tool No.	0-1/4, HS-02-R, #2-H, #3-H or #4-H					
	Wgt. Lbs. M/Pcs.	28	76	78	78	21	61
9/32	Use Tool No.	SL1-9					
	Part No.	0-9/32, #2-H or #4-H					
	Wgt. Lbs. M/Pcs.	28.5					
5/16	Part No.	SL1-10	SL2-10	SL2-10P	SL2-10TP	Available in Copper Only	ST2-10
	Use Tool No.	0-5/16, HS-02-R, #2-H, #3-H or #4-H					0-1/4, #2-H, #3-H or #4-H
	Wgt. Lbs. M/Pcs.	41	122	124	124		52
3/8	Use Tool No.	SL1-12	SL2-12	SL2-12P	SL2-12TP	Available in Copper Only	ST2-12
	Part No.	#3-H or #4-H					0-1/4, #2-H, #3-H or #4-H
	Wgt. Lbs. M/Pcs.	57	156	158	158		44
7/16	Part No.	SL1-14	SL2-14	SL2-14P	SL2-14TP	Special lengths of either copper or aluminum oval and stop sleeves available on special order.	
	Use Tool No.	#3-H or #4-H					
	Wgt. Lbs. M/Pcs.	116	282	284	284		
1/2	Use Tool No.	SL1-16	SL2-16	SL2-16P	SL2-16TP	Special lengths of either copper or aluminum oval and stop sleeves available on special order.	
	Part No.	#3-H or #4-H					
	Wgt. Lbs. M/Pcs.	172	384	386	386		



LOCOLOC® OVAL AND STOP SLEEVES

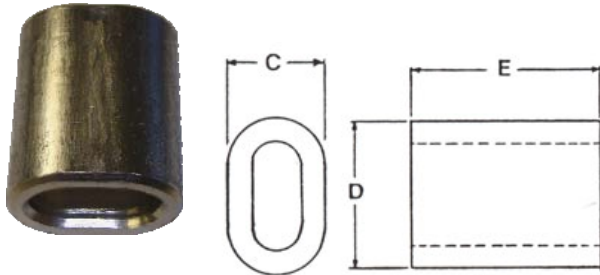
(COPPER OVAL SLEEVES CONFORM TO MILITARY SPEC. MS51844.)

Sleeves for eye, lap and stop sleeve splicing are available in either aluminum or copper in a wide variety of sizes ranging from 1/32" to 1/2" inclusive. All oval sleeves (copper or aluminum) are capable of supporting a greater load than the rated breaking strength of the cable to which they are attached when properly applied with LOCOLOC® Hand Swager to bare cable on 3x7, 7x7, 7x19 and 6x19 constructions. Stop sleeves capable of holding only 1/3 to 1/2 of the rated breaking strength of the cable to which they are attached. All sizes and types are bulk packaged. Copper oval sleeves available either plain, zinc, nickel, or tin plated. Plain copper supplied unless otherwise specified.

WIRE ROPE TERMINALS

LOCOLOC® STAINLESS STEEL OVAL SLEEVES

Locoloc® Stainless Steel Oval Sleeves make it simple and easy to lap and eye-splice stainless cable and wire rope. Ideal for general outdoor, marine, corrosive and other harsh environments. Conforms to MILS Spec MS51844.



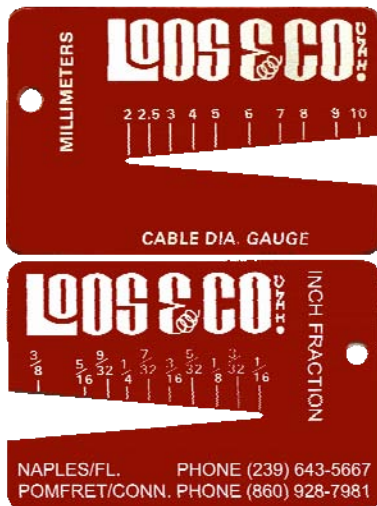
Part Number	Cable Dia.	Reference Dimensions			Use Tool Number	Approx. Part Wt. (Lbs/M)
		C	D	E ± 1/32		
SL11-1*	1/32	3/32	9/64	1/4	#1-3-SBHS (DI4-1)	.40
SL11-1.5*	3/64	1/8	13/64	3/8	0-3/64SC, #4-H (DI4-1.5)	1.6
SL11-2*	1/16	9/64	7/32	3/8	0-3/64SC, #4-H (DI4-1.5)	1.5
SL11-3*	3/32	11/64	9/32	3/8	0-1/16SC, #4-H (DI4-2)	1.7
SL11-4*	1/8	7/32	3/8	3/8	0-3/32SC, #4-H (DI4-3)	3.7
SL11-5*	5/32	5/16	31/64	47/64	0-1/8SC or #4-H (DI4-4)	14.1
SL11-6*	3/16	11/32	35/64	63/64	0-5/32SC or #4-H (DI4-5)	22.8
SL11-7*	7/32	27/64	21/32	7/8	0-3/16SC or #4-H (DI4-6)	31.4
SL11-8*	1/4	7/16	45/64	1 9/64	0-7/32, #2 or #4-H (DI4-7)	44.30
SL11-10*	5/16	9/16	7/8	1 3/8	0-9/32, #3-H(HD3-8), #4-H (DI4-9)	76.32
SL11-12*	3/8	5/8	1 1/32	1 3/8	#4-H (DI4-10)	102.50

CABLE DIAMETER GAUGE

To quickly determine diameter of any cable (up to and including 3/8" or 10 mm) this simple gauge does the trick. Merely slip it over a cable and when the cable fits snugly in the "V" slot, note the diameter printed on the gauge. One side reads in fractions of an inch, the other side in millimeters.

Very inexpensive insurance to eliminate using wrong size cable. Order several for all your workmen.

Easily carried in pocket or wallet. Lightweight and corrosion resistant.



Part No.	Wgt. Ea
GA 4*	1/4 oz

These gauges make ideal "give away" items for advertising purposes. We will supply them in quantity at very inexpensive cost, in your colors and with your message. Write for details.

LOCOLOC® THIN WALL ALUMINUM OVAL SLEEVES



For use on hemp, manila, nylon, Dacron, cotton and all types of fiber, or synthetic ropes, bungee cord, and plastic coated cables. **NOTE:** We do not guarantee nor do we imply the holding strength of these sleeves because the breaking strengths of the various materials on which they are used, the physical properties, tensile strengths, hardnesses, stretch factors and end uses are too vast and varied to cover all applications. We will supply samples for you to test, or will perform tests if you supply samples of material on which you wish to use these sleeves and will determine maximum holding strengths for your specific application. Length can be extended to increase holding strengths.

Part No.	To fit Rope Diam	Use Locoloc® Tool No.	Standard Length:	Wgt. Per M/Pcs.
SL1-3R*	1/8	#1-SC, 0-3/32SC or #4-H (DI4-3)	1/2	2 lbs.
SL1-4R*	5/32	#1-SC, 0-1/8SC or #4-H (DI4-4)	5/8	3.7 lbs.
SL1-5R*	3/16	#1-SC, 0-5/32SC or #4-H (DI4-5)	11/16	4.7 lbs.
SL1-6R*	1/4	#1-SC, 3/16SC or #4-H (DI4-6)	1	9.2 lbs.
SL1-7R	5/16	#4-H or 7/32 (DI4-7)	1-1/16	14.7 lbs.
SL1-8R*	3/8	#4-H (DI4-8)	1-1/8	15.7 lbs.
SL1-10R*	7/16	#4-H (DI4-10)	1-1/4	28.6 lbs.
SL1-12R*	1/2	#4-H (DI4-12)	1-7/16	39 lbs.

*Denotes Stock Item.

When ordering: Specify Part No. and diameter of cable hardware it is to fit.

LOCOLOC® HAND SWAGERS

Eye, lap and stop sleeve splicing of cables up to 1/2" diameter are made sure and easy with the new hand swagers. Design features "over-center" leverage, which transmits a powerful snap-action to the final thrust of the jaws... assures a tight, clean compression every time. Easy adjustment. Individual replacement parts are available for all models. Parts list included with each tool. Gauge included with each tool.



Locoloc® P/N: 000-WCI

LOCOLOC® 000-WCI HAND SWAGERS

Small, compact, can be carried in your pocket. Swages 1/32", 3/64", and 1/16" oval and stop sleeves.

Has built in cable cutter. Packaged in plastic pouch. 9" long, wt. 12 oz.



Locoloc® P/N: 0-1.5-3FS

LOCOLOC® 0-1.5-3FS HAND SWAGER

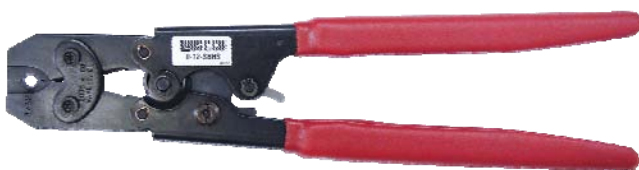
Swages 3/64", 1/16" and 3/32" oval and stop sleeves, plus 1/8" stop sleeves. Full width jaws allow you to do full swages with only one compression. 14" long, 3.6 lbs.



Locoloc® P/N: #1-3-SBHS

LOCOLOC® #1-3-SBHS HAND SWAGER

This tool is an outstanding small hand tool, and it does a great job of swaging small sleeves. This is a (4) cavity tool, swaging sleeve sizes 1/32", 3/64", 1/16", and 3/32". Ratchet mechanism will not release until swage is complete. Swages copper and aluminum sleeves only. Usage instructions and swage gauge included in each tool. 12" long.



Locoloc® #0-12-SBHS-R

LOCOLOC® #0-12-SBHS-R HAND SWAGER

This tool is an outstanding small hand tool, and it does a great job of swaging small sleeves.

This is a (1) cavity tool, swages sleeve size 3/32" copper and aluminum sleeves. Ratchet mechanism will not release until swage is complete.

LOCOLOC® HAND SWAGERS



Locoloc® P/N: 0-SC

LOCOLOC® #0-SC HAND SWAGERS

Single compression die for oval and stop sleeve swaging.

P/N: 0-3/64SC - swages 3/64" oval and stop sleeves, plus 3/64" and 1/16" stainless steel oval sleeves.

P/N:0-1/16SC - swages 1/16" oval and stop sleeves, plus 3/32" stainless steel oval sleeves.

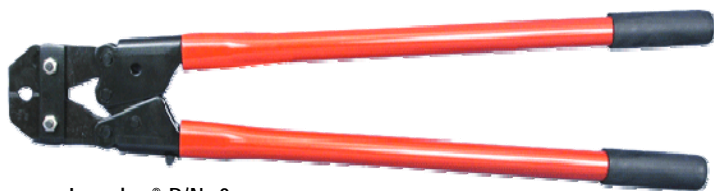
P/N:0-3/32SC - swages 3/32" oval and 3/32", 1/8" stop sleeves, plus 1/8" stainless steel oval sleeves.

P/N:0-1/8SC - swages 1/8" oval and 5/32", 3/16", 7/32" stop sleeves plus 5/32 stainless steel sleeves.

P/N: 0-5/32SC - swages 5/32" oval sleeves and 3/16 stainless steel.

P/N:0-3/16SC - swages 3/16" oval sleeves and 7/32 stainless steel

All No. 0-SC tools - 20" long, wt. 4.2 lbs.



Locoloc® P/N: 0

LOCOLOC® 0- HAND SWAGERS

Single compression die for oval and stop sleeve swaging.

P/N: 0-7/32 - swages 7/32" oval sleeves and 1/4 stainless steel.

P/N: 0-1/4 - swages 1/4" oval and 1/4", 9/32", 5/16" stop sleeves & 3/8 stops.

P/N: 0-9/32 - swages 9/32" oval sleeves.

P/N:0-5/16 - swages 5/16" oval sleeves.

All No. 0 tools - 28" long, wt. 5 lbs.



P/N: #1-SC

LOCOLOC® #1-SC HAND SWAGER

Multi-compression hand swager with cable cutter. Swages 1/16", 3/32", 1/8", 5/32" and 3/16" oval and stop sleeves, plus 7/32" stop sleeves, total of 11 sizes plus the ability to cut up to 7/32" diameter aircraft quality steel cable. A tool with a dozen functions! 26" long, wt. 6.5 lbs.

For Stainless Steel sleeves use "0" tool.



P/N: #1-BSC

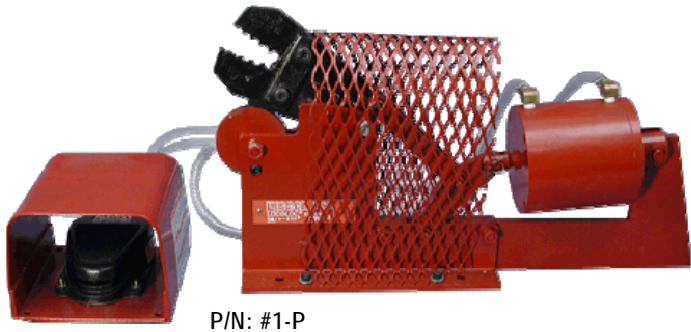
LOCOLOC® #1-BSC BENCH SWAGER

For in shop one location jobs. Multi-compression jaws swage 1/16", 3/32", 1/8", 5/32", and 3/16" oval and stop sleeves plus 7/32" stop sleeves. 22.5" long, 6.25" high (24" high with handle up), 6.6 lbs.

This tool is for Copper and Aluminum only.

LOCOLOC® HAND SWAGERS

LOCOLOC® #1-P PNEUMATIC SWAGER



P/N: #1-P

For the shop requiring a production tool, the #1 Pneumatic Swager eliminates hand labor and automates swaging of Locoloc® oval and stop sleeves.

Utilizing the jaws of the #1 Bench Swager the #1-Pneumatic Swager will swage all 1/16", 3/32", 1/8", 5/32", and 3/16" oval and stop sleeves plus 7/32" stop sleeves. (11 sizes in all!)

Foot switch operation allows free movement of hands and quick disconnect to your air supply. Operates on standard air supply. (140 psi, minimum.) 20" long, 11" high, wt. 27.5 lbs.

This tool is for Copper and Aluminum only.

LOCOLOC® AZP Kit / CSS KIT SWAGER



Shipping weight 20lbs.

All you need to swage popular sizes . . . contains #1-SC Hand Tool, a C7 Cable Cutter, assortment of stop and oval sleeves, assortment of thimbles . . . will handle all sizes from 1/16" up to and including 3/16". Packaged in rugged steel tool box. Supplied with aluminum sleeves and zinc plated steel thimbles or with copper sleeves and stainless steel thimbles.

For itemized list of tools and hardware in each kit refer to price list.

Model No. Type

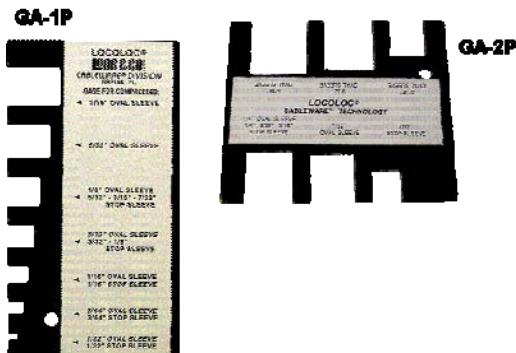
AZP Kit.....Aluminum & Zinc Plated
 CSS Kit.....Copper & Stainless Steel

ALL HAND SWAGERS AVAILABLE FROM STOCK
 All hand swagers shipped with corresponding gauge.

LOCOLOC® SLEEVE GAUGES

GA-1P*: Gauges all swages performed by 000-WCI, 1-3SBHS 0-SC, and #1 tools (1/32", 3/64", 1/16", 3/32", 1/8", 5/32", and 3/16" oval and stop sleeves).

GA-2P*: Gauges all swages performed by No.0-SC tools (7/32", 1/4", 9/32", and 5/16").



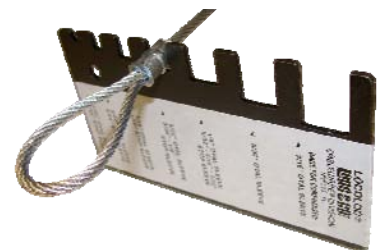
To assure proper swaging of Locoloc® aluminum, copper and stainless steel sleeves with Locoloc® tools these simple, "Go" "No-Go" Gauges will determine if your tools are out of adjustment or alignment.

When the proper slot in the gauge slips over the compressed area of the sleeve after swaging then your swage is satisfactory.

If the proper slot does not fit over the compressed area of the sleeve after swaging then your tool is out of adjustment and your cable assembly will not hold the rated breaking strength of the cable which should be the result when oval sleeves are used to form a loop or eye in a cable assembly.

Stop sleeves must also be properly compressed and gauged to reach their rated loads which is 1/3 to 1/2 the breaking strength of the cable, depending on cable diameter.

The Locoloc® sleeve gauges will measure all oval or stop sleeves used on 1/32" up to and including 5/16" diameter cable.



LOCOLOC® HAND SWAGERS

LOCOLOC® #3-H HYDRAULIC HAND SWAGER



Locoloc® No. #3-H

Exerts 14 tons pressure. A few strokes of handle brings the dies from wide open to contact with the fitting to be swaged. Then an internal valve automatically shifts from the low pressure pump stage to the high pressure compression stage. A relief valve prevents over-compression.

The advanced-retract control for the ram is located in the moveable handle. It is operated by twisting the handle less than a 1/4 turn. Full visibility of the working area is afforded by the narrow, 180 degree swivel "C" head, making it easy to position the dies on the fitting.

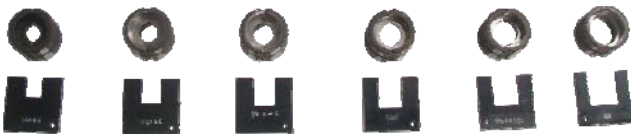
Very rugged, yet portable, this hydraulic hand swaging press with interchangeable dies is for compressing aluminum or copper oval sleeves on 1/4", 9/32", 5/16", 3/8", 7/16" and 1/2" diameter cable and wire rope, plus aluminum or copper stop sleeves on 1/4", 9/32", 5/16" and 3/8" diameter cable and wire rope. Gauge supplied with each die.

#3 LOCOLOC® Hand Swager is 24" long, weighs 15 lbs. Dies weigh 1 lb. each, and comes with carrying box.



Available in complete kit, No. 3-K. (see below)

LOCOLOC® #3-K HYDRAULIC HAND SWAGER KIT



#3-H DIES

Loos Part No	Description
HD3-8	1/4 Copper or Aluminum Oval + 1/4 9/32, 5/16 & 3/8 stop sleeves.
HD3-10	5/16 Copper or Aluminum Oval Sleeve
HD3-12	3/8 Copper or Aluminum Oval Sleeve
HD3-14C	7/16 Copper Oval Sleeve
HD3-14A16C	7/16 Aluminum Oval and 1/2 Copper Oval Sleeves
HD3-16A	1/2 Aluminum Oval Sleeve

LOCOLOC® BATTERY SWAGING TOOLS

LOCOLOC® HC-3010-R BATTERY POWERED HAND SWAGER

Swages aluminum and copper oval sleeves for 3/32", 1/8" and 3/16" size wire rope.



Length: 20.5"
Wide: 2.5"
Height: 4"
Weight: 13 lbs.

- Operates in Confined Spaces
- 6 Ton Output
- One Hand Operation
- Fully Enclosed Weather Resistant Housing

STANDARD ACCESSORIES INCLUDED:

- 1 Carrying Case
- 1 Battery Charger
- 2 TBP-80 Lithium Ion Batteries
- 1 Carrying Strap



HC-3010-R

LOCOLOC® HC-5010-R BATTERY POWERED HAND SWAGER

Swages aluminum and copper oval sleeves for 3/32", 1/8", 3/16", 1/4 and 5/16" size wire rope.



Locoloc® HC-5010-R

Length: 22"
Weight: 8.75 lbs. with battery
Output: 6 Ton

- Operates in Confined Spaces
- 6 Ton Output
- One Hand Operation
- Fully Enclosed Weather Resistant Housing
- LED Work Lights

STANDARD ACCESSORIES INCLUDED:

- 1 Carrying Case
- 1 Battery Charger
- 2 TBP-80 Lithium Ion Batteries
- 1 Carrying Strap



HC-5010-R Dies (sold separately)

Loos P/N	Description
DI2-3	Die For 3/32 Copper & Aluminum Sleeve
DI2-4	Die For 1/8 Copper & Aluminum Sleeve
DI2-6	Die For 3/16 Copper & Aluminum Sleeve
DI2-8	Die For 1/4 Copper & Aluminum Sleeve
DI2-10	Die For 5/16 Copper & Aluminum Sleeve

LOCOLOC® BATTERY HAND SWAGER TOOLS

LOCOLOC® HC-3410 BATTERY HAND SWAGER



Locoloc® HC-3410

Weight: 19 lbs. with Battery
 Output: 12 Ton
 Jaw Opening: 1"
 Size: 18" L x 10.5" H x 3.5"W

Swages aluminum and copper oval sleeves for 1/4" up to 1/2" size wire rope.

- Rotational Head
- Rapid Advance
- Ergonomically Balanced
- Audible Bypass when Predetermined Pressure is Achieved
- Weather Resistant Housing
- Protective Rubber Boot on "C" Head

HC-3410 Dies (sold separately)

Loos Part No	Description
HD3-8	1/4 Copper or Aluminum Oval + 1/4 9/32, 5/16 & 3/8 stop sleeves.
HD3-10	5/16 Copper or Aluminum Oval Sleeve
HD3-12	3/8 Copper or Aluminum Oval Sleeve
HD3-14C	7/16 Copper Oval Sleeve
HD3-14A16C	7/16 Aluminum Oval and 1/2 Copper Oval Sleeves
HD3-16A	1/2 Aluminum Oval Sleeve

LOCOLOC® HC-5430 BATTERY POWERED HAND SWAGER



Locoloc® HC-5430

Weight: 14.75 lbs. with Battery
 Size: 15.5"L x 12"H x 3"W
 Jaw Opening: 1-3/16"
 Output: 12 Ton

Swages aluminum and copper oval sleeves for 1/4" up to 1/2" size wire rope. Designed for use in single-handed operation.

- Rotational Head
- Rapid Advance
- Ergonomically Balanced
- Audible Bypass when Predetermined Pressure is Achieved
- Weather Resistant Housing
- Protective Rubber Boot on "C" Head

HC-5430 Dies (sold separately)

Loos Part No	Description
HD3-8	1/4 Copper or Aluminum Oval + 1/4 9/32, 5/16 & 3/8 stop sleeves.
HD3-10	5/16 Copper or Aluminum Oval Sleeve
HD3-12	3/8 Copper or Aluminum Oval Sleeve
HD3-14C	7/16 Copper Oval Sleeve
HD3-14A16C	7/16 Aluminum Oval and 1/2 Copper Oval Sleeves
HD3-16A	1/2 Aluminum Oval Sleeve

All Standard BATTERY OPERATED TOOLS Include:



BATTERY CARTRIDGE



BATTERY CHARGER

- 1 Carrying Case
- 1 Battery Charger
- 2 TBP-80 Lithium Ion Batteries
- 1 Carrying Strap



PRECISION CABLE CUTTERS

Swiss made FELCO cutters are recognized around the world for their precision manufacture and cutting capabilities. Lightweight enough for overhead cutting yet strong enough for underwater work. Plastic coated handles afford a firm, comfortable grip. Replacement parts are available from stock. All cutters tested before leaving the factory.

FELCO C7 CABLE CUTTER



FELCO C7



High-strength Blades

Hardened and tempered for cutting the strongest of cables.

Capacity: 5/32" on stainless steel diameter and smaller.
Length: 8"
Weight: 10 oz.

A cable when crushed or deformed in cutting is difficult to use with fittings. These cable cutters, with unique triangular jaws, never leave a frayed end. Cutters range from the lightweight

FELCO C3 CABLE CUTTER



FELCO C3



High-strength Blades

Hardened and tempered for cutting the strongest of cables.

Capacity: 3 mm for high tensile strength wires and tire cords/cables.
Length: 7.5 in. / 190mm
Weight: 9.05 oz / 270g

FELCO C3 — Cutting surface of blades is more than 10% harder than the C7 FELCO Cutter, giving longer service life in heavy use. Length of cutting blades is same as the C7, this will allow user to "capture" cable or wire in cutting motion. Handle opening is only 4.5 inches, giving a very comfortable fit for even the smallest of hands. Softer spring allows easy closure of the tool, vastly reducing repetitive motion stress.

FELCO CP CUTTER



FELCO CP

Length: 8"
Weight: 10 oz.

Type CP Cutters — For Steel Strapping and Banding. CP cutters are indispensable for cutting steel strapping and banding. They are also especially good for cutting string, twine, rope, tin and many other materials with ease. The red plastic handle is fitted to the hand to make cutting comfortable. A thumb catch locks the cutter when not in use, designed for one-handed operation. Pressed steel handles with non-slip grips.



ALL CUTTERS AVAILABLE FROM STOCK

PRECISION CABLE CUTTERS

Swiss made FELCO cutters are recognized around the world for their precision manufacture and cutting capabilities. Lightweight enough for overhead cutting yet strong enough for underwater work. Plastic coated handles afford a firm, comfortable grip. Replacement parts are available from stock. All cutters tested before leaving the factory.

FELCO C9 CABLE CUTTER



FELCO C9

Capacity: cuts 1/4" steel cable.
Length: 13" / 325mm
Weight: 1.5 lbs./ 750g

High-strength Blades

Blades and fastenings in high-quality hardened steel



FELCO C9 — Fills the gap between C7 and C12 — Ideal for the tool kit. FELCO's innovative triangular cut allows you to progressively cut cable wires and at the same time avoid squashing of strands. Thanks to this feature, it is generally not necessary to tie the cable before the cut. Forged Aluminum handles. Lightweight, strong and sturdy thanks to special aluminum alloys and advanced precision forging methods.



SHEATH-L

A favorite accessory with spring clip to be attached to pocket or belt. Fits C3, C7, CP and CDO . Available in leather and plastic.

Leather SHEATH with belt loop and clip
Length: 9.3" / 235mm
Weight: 3.9 oz./ 110g

SHEATH-P



Plastic SHEATH
Weight: 3 oz.

FELCO C108 CABLE CUTTER



FELCO C108

Weight: 4.5 lbs.
Length: 22" / 560 mm

Reliable: unbreakable hardened handles made of forged aluminum , blades and fastenings in high-quality hardened steel, phosphate-treated, corrosion-resistant .

Ergonomic: lightweight handles / helpful lever effect / comfortable plastic coating.



Simple construction, all parts protected against rust and salt water. Designed as an indispensable part of boat equipment. Especially suited for quick easy cutting of shrouds, stays, halyards, and other rigging of hi-tensile wire rope or cable up to 5/16" diameter. Inexpensive insurance for that rare time when a mast breaks. The C108 will cut virtually any material including steel rods up to 5/16" diameter and tempered steel spring wires up to 1/4" diameter.

PRECISION CABLE CUTTERS

Swiss made FELCO cutters are recognized around the world for their precision manufacture and cutting capabilities. Lightweight enough for overhead cutting yet strong enough for underwater work. Plastic coated handles afford a firm, comfortable grip. Replacement parts are available from stock. All cutters tested before leaving the factory.

FELCO C112 CABLE CUTTER



FELCO C112

Capacity of 1/2" hi-tensile strands.
Weight: 8.25 lbs.
Length: 29"

Reliable: unbreakable hardened handles made of forged aluminum, blades and fastenings in high-quality hardened steel, phosphate-treated, corrosion-resistant.

Ergonomic: lightweight handles / helpful lever effect / comfortable plastic coating.



Like the C108, this cutter also has maximum force transmission which applies the maximum leverage just at the right moment. This coupled with Swiss precision blades make the C112 and the C108 amazingly easy to use.

FELCO C12 CABLE CUTTER



FELCO C12

Capacity: 3/8" diameter and smaller.
Length: 19" / 500mm
Weight: 3 lbs. / 1500g

Reliable: unbreakable hardened handles made of forged aluminum, blades and fastenings in high-quality hardened steel.

Ergonomic: lightweight handles / helpful lever effect / comfortable plastic coating



Efficient: clean, precise cut without crushing the cable thanks to the triangular cutting system / easy and durable cutting adjustment

FELCO C16 CABLE CUTTER



FELCO C16

Capacity: 5/8" diameter and smaller.
Length: 23".
Weight: 5 lbs.

Reliable: unbreakable hardened handles made of forged aluminum, blades and fastenings in high-quality hardened steel.

Ergonomic: lightweight handles / helpful lever effect / comfortable plastic coating



Efficient: clean, precise cut without crushing the cable thanks to the triangular cutting system / easy and durable cutting adjustment

PRECISION CABLE CUTTERS

FELCO CB BASE- For Mounting C9, C12 and C16 CUTTERS



Length: 13 inches / 325mm
Weight: 1.5 lbs./750g

CB Base

Simply remove one handle from your C9 , C12 or C16 Cutter, bolt on our base and your portable cutter has been converted to a stationary bench mounted cutter.



IMPORTANT: It is possible to cut larger diameter than those mentioned above by separating the individual strands of the rope by using the triangular cutting action to nip these out. Types C108 and C112 are particularly recommended for this kind of work.

FELCO CDO BARBED WIRE CUTTER



FELCO CDO

Length: 7 3/4" in./ 195mm
Weight. 9.9 oz. / 280g

Cutter especially designed for cutting barbed wire. Its cutting notch allows the wire to be caught by holding it at the bottom of the cutting profile. Small and efficient, it can easily be carried in a pocket.



The FELCO Commando cutter is the most efficient barbed wire cutter. Its small size and the thumb operated locking catch enable this handy cutter to fit in the pocket. Its triangular cutting action makes one-handed cutting easy. Hardened steel blades and centre bolt, pressed steel handles with plastic coating.

SPRING LOADED, AUTOMATIC RETURN, WIRE TWIST, SAFETY WIRE PLIER



Safety Twist Plier
No. IW393

Length: 10 in.
Weight: .5 lbs.

LOCOLOC® SAFETY TWIST PLIER - IW393

3 tools in one — cutter, wire twister and a pair of pliers. You can grip, twist and snip safety wire faster and better than ever before. Designed for aircraft, industrial and other "Vibrating" applications. The Safety Twist Plier is a versatile tool to help you do reliable safety-wiring (lock wiring) rapidly and consistently. Safety-wiring remains the most positive and assured method of securing critical fasteners that must not be allowed to back out: any tendency of the fastener to loosen is counteracted by tightening of the safety wire.

LOCOLOC® HYDRAULIC CABLE CUTTER

LOCOLOC® HC-16 HYDRAULIC CABLE CUTTER



LOCOLOC® HC-16

Portable, lightweight, and made to last years under the toughest field conditions. This tool is made of high grade steel and have rubber handle grips. It is black zinc oxide coated to help reduce corrosion. A flip-top latch opens the tool jaw to easily accept cables and wires. The head can be rotated up to 180° to facilitate easy wire positioning and operator leverage.

Cutting Capacity: 5/8"
Output: 4.4 Ton
Length: 15"
Weight: 6 lbs.
Jaw Opening: .6"

- Lightweight and Portable
- Works in Any Position
- 180 Rotational Head

Replacement Blade P/N: 20-07

LOCOLOC® HC-16PL HYDRAULIC CABLE CUTTER NICKEL PLATED



LOCOLOC® HC-16PL

The HC-16PL is a saltwater resistant, nickel-plated cutter for use in underwater environment. Its recommended uses include: marine nautical cutting, emergency cutting of stainless steel wire rope rigging and hardware, underwater rebar and cable cutting, and yacht mast rod cutting up to 1/2".

Requires minimum pumping effort to produce specified output tonnage. Made to last years under the toughest field conditions. A flip-top latch opens the tool jaw to easily accept cables and wires.

Cutting Capacity: 5/8"
Output: 4.4 Ton
Length: 16"
Weight: 6 lbs.
Jaw Opening: .75"
Plating: Nickel

- Lightweight and Portable
- Works in Any Position
- 180 Rotational Head
- HC-16PL is Nickel Plated for Underwater Use

Replacement Blade P/N: 20-07

LOCOLOC® HC-20 HYDRAULIC CABLE CUTTER



LOCOLOC® HC-20

Portable, lightweight, and made to last years under the toughest field conditions. This tool is made of high grade steel and have rubber handle grips. It is black zinc oxide coated to help reduce corrosion. A flip-top latch opens the tool jaw to easily accept cables and wires.

Cutting Capacity: 3/4"
Output: 4.4 Ton
Weight: 6 Lbs.
Size: 14"L
Jaw Opening: .75"

- Lightweight and Portable
- Works in Any Position
- 180 Rotational Head

Replacement Blade P/N: 20-07

LOCOLOC® HYDRAULIC CABLE CUTTER

LOCOLOC® HC-24 HYDRAULIC CABLE CUTTER



Portable, lightweight, and made to last years under the toughest field conditions. This tool is made of high grade steel and have rubber handle grips. It is black zinc oxide coated to help reduce corrosion.

A flip-top latch opens the tool jaw to easily accept cables and wires. The head can be rotated up to 180° to facilitate easy wire positioning and operator leverage..

Cutting Capacity: 7/8"
 Output: 7.8 Ton
 Length: 17"
 Weight: 9 lbs.
 Jaw Opening: .9"

- Lightweight and Portable
- Works in Any Position
- 180 Rotational Head

Replacement Blade P/N: 20-08

LOCOLOC® HC-20B HYDRAULIC BATTERY POWERED CABLE CUTTER



This tool was designed to cut the toughest steel used in construction today. It can replace an entire tool kit, including several sizes of conventional bolt cutters, hacksaws, acetylene torches and cable cutters.

With a pull of a trigger, you can cut wire rope up to 5/8", standard guy wires to 3/8", and rebar to 1/2". The specially designed flip-top latch and rotating head provide exceptional ease of use and maneuverability in tight working quarters. The HC-20B has an overload bypass that will "kick out" when the tool reaches 6.6 tons or is attempting to cut cables beyond its capacities.

Output: 6.6 Ton
 Length: 12"
 Height: 12"
 Width: 2.5"
 Weight: 9.5 lbs. with Battery
 Jaw Opening: .75"

STANDARD ACCESSORIES INCLUDED:

- 1 Carrying Case
- 1 Battery Charger
- 2 TBP-80 Lithium Ion Batteries
- 1 Carrying Strap

Replacement Blade P/N: 20-07

LOCOLOC® REPLACEMENT BLADES



20-07



20-07P



20-08

Loos Part No.	Description
20-07	Replacement Blade for HC-16, HC-20, & HC-20B
20-7P	Replacement Blade for HC-16P
24-08	Replacement Blade for HC-24

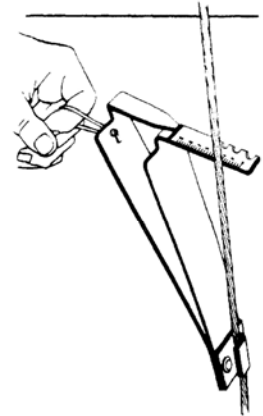
TENSION GAUGES

Loos Cableware® Division offers a series of gauges to measure the tension in cables and rods from 3/32 to 3/8 inch in diameter (2.5 mm to 10 mm). These gauges are designed for setting the proper tension in the standing rigging of sailboats and also for other applications such as supporting cables for radio towers, large tents and other structures. The gauges are relatively inexpensive and are designed to be suitable for rugged marine service. The gauges measure tension over a range of approximately 5% to 25% of the breaking strength of the cable or rod and provide an accuracy of + or - 5%. The "Professional Models", PT , RT series provide an increasing durability, accuracy and convenience of use when compared to our popular standard models. The gauge may be hooked on the wire and will remain in position while the tension is adjusted. Manufactured of rugged anodized aluminum, this gauge is corrosive resistant and will give years of service. Detailed operating instructions are included with each tension gauge.

STANDARD MODELS A & B



The LOOS & CO economy tension gauge takes the guesswork out of cable tension adjustment. It's especially designed for accurate, repeatable tuning of a sailboat's standing rigging. Manufactured of rugged anodized aluminum, the gauge is corrosion-resistant and will provide years of service.



Part No.	Description
91-Model A*	Cable Sizes 3/32", 1/8", 5/32"
90-Model B*	Cable Sizes 3/16", 7/32", 1/4", 9/32"
91-Metric*	Cable Sizes 2.5mm, 3mm, 4mm
90-Metric*	Cable Sizes 5mm, 6mm, 7mm

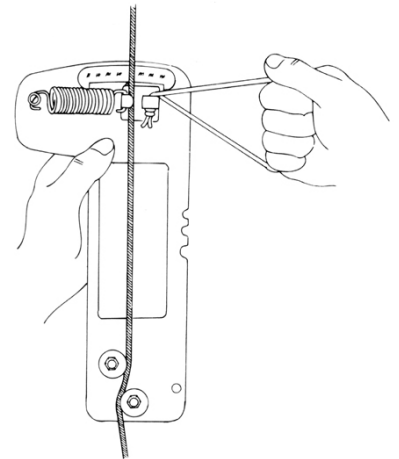
Note: The intended use of this gauge is to be used on 302/304 1x19 Stainless Steel cable in appropriate sizes. If used on other cable types, sizes and construction your reading would be consistent (repeatable) but pound tension values would differ from those listed on the label.

PROFESSIONAL MODELS



Higher accuracy and easier to use than standard models. The cable can be adjusted while the gauge remains on the cable. *"Just watch the pointer move."*

Part No.	Description
PT-1*	Cable Sizes 3/32", 1/8", 5/32"
PT-2*	Cable Sizes 3/16", 7/32", 1/4"
PT-3*	Cable Sizes 1/4", 9/32", 5/16", 3/8"
PT-1 Metric*	Cable Sizes 2.5mm, 3mm, 4mm
PT-2 Metric*	Cable Sizes 5mm, 6mm, 7mm
PT-3 Metric*	Cable Sizes 7mm, 8mm, 9mm, 10mm



All readings are based on 302/304 1x19 S.S breaking strengths.

TENSION GAUGES

PROFESSIONAL MODEL #PT-CR



The LOOS & CO Professional Model #PT-CR tension gauge is designed to provide an accurate measurement of the tension in architectural cable railing systems.

The Model #PT-CR is designed to measure cable tension in lbs. for 1/8", 3/16", and 1/4" 1x19 cables. Readings of between 200 and 400 lbs. are shown on the easy to read scale.

All readings are based on 302/304 1x19 S.S breaking strengths.

ROD RIGGING GAUGE



We offer a series of gauges to measure the tension in rods from .172 to .375 inch in diameter over a range of approximately 5% to 25% of the breaking strength of the rod and provide an accuracy of + or - 5%. The "Professional Model" RT series provides an increasing durability, accuracy and convenience of use. Manufactured of rugged anodized aluminum, this gauge is corrosive resistant and will give years of service. Detailed operating instructions are included with each tension gauge. Operates in the same manner as the Professional Model Series.



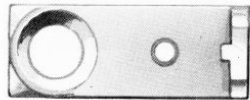
Part No.	Description
RT-10*	Rod Sizes .172, .198, .225, .250, .281
RT-11*	Rod Sizes .281, .330, .375
RT-10M*	Rod Sizes: 4.4, 5, 5.7, 6.3 and 7.1
RT-11M*	Rod Sizes: 7.1, 8.4 and 9.5

SIMPLEX® WIRE - CABLE STRIPPERS AND CUTTERS

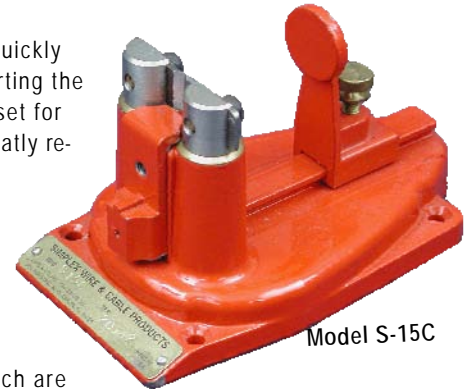
These fine tools have been produced since 1920 and have enjoyed a world-wide reputation for quality and service for over 60 years. LOOS & CO Cableware® Division manufactures this line of strippers and cutters in its Naples, Florida plant. Replacement parts and repair services are now available to the many thousands of customers who already own these tools.

SIMPLEX® CABLE STRIPPER S-15C

Sturdy, inexpensive, high production wire stripper for cables up to 3/16" diameter. Quickly removes all types of insulation materials by simply inserting the wire or cable through the oscillating blades to the stop set for the desired length to be stripped. A quick withdrawal neatly removes the insulation.



Size : 2-3/4" x 5" x 3 High.
Weight: 2 lbs.



Model S-15C

These illustrations show the removable and reversible wire guide and groove blades which are available in various hole sizes to suit the wire being stripped. Wire guide maximum hole diameter is .375" and blade maximum hole diameter is .375".

BLADES are not furnished as standard equipment with the Model S-15C but MUST BE ORDERED SEPARATELY

SIMPLEX® CABLE STRIPPER S-30C

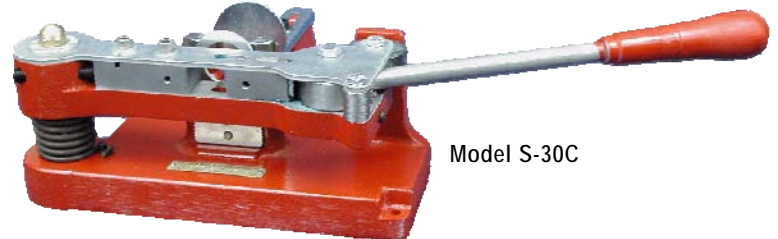
Operates the same as S-15 but has extension handle for leverage. Capable of removing metallic sheathing, cambric, synthetic braided, plastics of all types including battery cables and multiple conductors.



Blade Max. hole Diam. is .563"



Bushing Max. hole Diam. is .750"



Model S-30C

We recommend the use of Grooved Blades when removing outer jacketing and shielding and particularly on multi stranded wire where a clean stripped end is required.

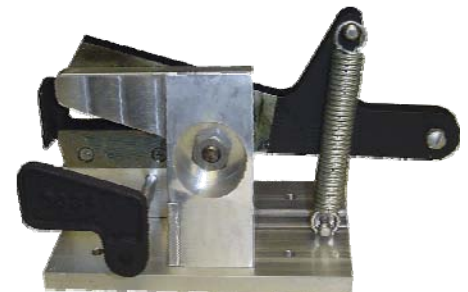
Size: 9" x 10" x 5" High
Shipping weight: 20 lbs.
Maximum capacity : up to 3/4" diameter.

BLADES are not furnished as standard equipment with the Model S-30C but MUST BE ORDERED SEPARATELY

SIMPLEX® WIRE CABLE CUTTER C-20A

Rugged, simple operation for cutting insulated cables and insulation materials. NOT DESIGNED TO CUT STEEL CABLE. But ideal for copper, aluminum, etc. Blades are removable and replaceable, adjustable to 1" maximum opening, made of high grade tool steel. Able to cut heavy cable indefinitely and then cut thinnest paper cleanly. A versatile piece of equipment which will give years of trouble-free service.

Size: 3 1/2" x 10"
Height: 6"
Shipping weight: 22 lbs.



#4-H LOCOLOC® HYDRAULIC SWAGER

Strong and Powerful - The #4-H Locoloc® combines 30 tons of strength with an independent hydraulic power supply.

Compact - It's lighter and more compact than normal, low or medium pressure hydraulic units.

Consistent - This swager assures dependable pressure for strong, dependable cable assemblies.

With years of outstanding performance in LOOS & CO., Inc.'s Wire Rope Division's plant, the #4-H Locoloc® Hydraulic Swager has a reputation for reliable production. It's quality components include:

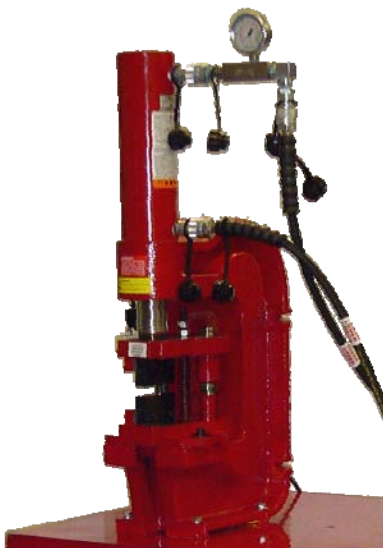
- A 1 1/2 HP 115 volt powered 2 stage hydraulic pump and 4-way valve assembly with integral 5 gallon reservoir.
- A 3" bore hydraulic cylinder rated for 10,000 PSI.
- A control system providing a method of changing pressure and actuating the hydraulic swaging unit.
- A convenient work stand on which the swaging package is mounted.
- A wide selection of swaging dies developed and proven by LOOS & CO Cableware® Division.

Greater Production - This 10,000 PSI system swages 3/64" to 1/2" Locoloc® aluminum and copper oval and stop sleeves with ease.* The #4 Locoloc® Hydraulic Swager, swages from 500 PSI every 1 second (approx.) to 8,000 PSI every 6 seconds (approx.).

If you suspect slow swaging production may be stealing some of your profits, find out more about the #4-H Locoloc® Hydraulic Swager. *Alias: The Production Pusher.*

Ask us about the many types of hardware and cable we offer to solve your production needs, including Locoloc® aluminum and copper oval and stop sleeves.

For dependable swaging, use only Locoloc® Aluminum and Copper oval and stop sleeves.



Dies (sold separately)

Dies for the #4-H	
Part Number	Description
DI4-1.5	3/64 Oval or Stop, Copper or Aluminum Sleeves
DI4-2	1/16 Oval or Stop, Copper or Aluminum Sleeves
DI4-3	3/32 Oval , 3/32 and 1/8 Stop , Copper or Aluminum Sleeve
DI4-4	1/8 Oval, 5/32, 3/16 & 7/32 Stop, Copper or Aluminum Sleeve
DI4-5	5/32 Oval Copper or Aluminum Oval Sleeves
DI4-6	3/16 Oval Copper or Aluminum Oval Sleeves
DI4-7	7/32 Oval Copper or Aluminum Oval Sleeves
DI4-8	1/4 Oval, 1/4,9/32 & 5/16 Stop, Copper or Aluminum Sleeves
DI4-9	9/32 Oval Copper or Aluminum Sleeves
DI4-10	5/16 Oval Copper or Aluminum Sleeves
DI4-12	3/8 Oval Copper or Aluminum Sleeves
DI4-14	7/16 Oval Copper or Aluminum Oval Sleeves
DI4-16	1/2 Oval Copper or Aluminum Sleeves

LOCOLOC® HAND SWAGER - TYPE I

LOCOLOC® PORTABLE MANUAL SWAGING MACHINE - M1

This portable, hand operated roll type swaging machine, will swage MS type terminals onto galvanized and stainless steel cables from 1/16" diameter up to and including 3/16" diameter. Marine -industrial terminals can also be assembled if the terminals have the same outside diameter and bore diameters as standard MS terminals before swaging.

Shipping Weight: 54 Lbs.
Conforms to MIL Spec MIL-S-6180



LOCOLOC® PORTABLE MANUAL SWAGING MACHINE KIT - M1-K

The LOCOLOC®-Kearney Type I Roll Swaging Kit, includes the machine (M1), a full set of roll dies (5 Shank Terminal Roll Dies, 3 sets Ball Terminal Dies), terminal gauges, and feed guide adapters in a steel carrying and storage case.

Shipping Weight: 64 Lbs.
Conforms to MIL Spec MIL-S-6180

Straight Shank Terminal Dies Weight: 4 Lbs. Ea. Set
Ball Terminal Dies Weight: 4 Lbs. Ea Set.
Gauges Weight: 1 Lb. Ea.



Index No.	Loos Part No.	Old Part No.	Part Name	Qty.
1	M1(74)	7-4	Swaging Machines with Case, Allen Wrench, Feed Guide Assembly and Feed Guide Adapters	1
2	M1-B2	12748-10	Shank-Type Ball Terminal Roll Assy. (for 1/16 inch cable)	1
3	M1-B3	12748-11	Shank-Type Ball Terminal Roll Assy. (for 3/32 inch cable)	1
4	M1-B4	12748-12	Shank-Type Ball Terminal Roll Assy. (for 1/8 inch cable)	1
5	GA-B24	12971-1	Ball-Type Terminal Gauge (1/16-3/16 inch cable)	1
6	M1-S2	13655-7	Straight-Shank Terminal Roll Assy. (for 1/16 inch cable)	1
7	M1-S3	13655-17	Straight-Shank Terminal Roll Assy. (for 3/32 inch cable)	1
8	M1-S4	13655-27	Straight-Shank Terminal Roll Assy. (for 1/8 inch cable)	1
9	M1-S5	13655-37	Straight-Shank Terminal Roll Assy. (for 3/16 inch cable)	1
10	M1-S6	13655-47	Straight-Shank Terminal Roll Assy. (for 1/4 inch cable)	1
11	GA-S26	12971-2	Straight-Shank Terminal Gauge (1/16-3/16 inch cable)	1

LOCOLOC® MANUAL BENCH SWAGER - TYPE II



LOCOLOC® MANUAL BENCH SWAGER - M2

A more sophisticated swaging machine which is bench mounted, hand powered with crank geared down for easy operation. This swaging machine will accomplish the swaging of AN or MS type fittings on all galvanized and stainless steel cable up to and including 3/8" diameter. Available in kit complete with swaging machine and dies or machine and dies can be purchased separately .

Shipping Weight: 225 Lbs.
Conforms to MIL Spec MIL-S-6180

LOCOLOC® MANUAL BENCH SWAGING MACHINE KIT - M2-K

Shipping Weight: 425 Lbs.
Conforms to MIL Spec MIL-S-6180

Straight Shank Dies Weight: 8.5 Lbs. Ea. Set
Ball Terminal Dies Weight: 10 Lbs. Ea. Set.
Gauges Weight: 1 Lb. Ea



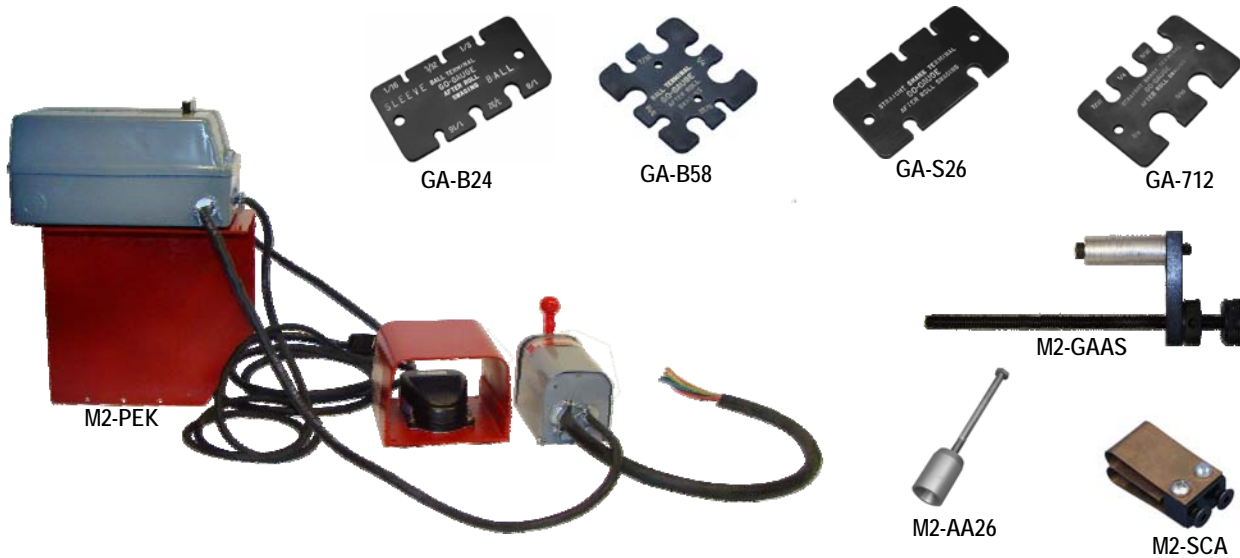
Type II Bench Mounted Swaging Machine Kit contains the following (as illustrated):

- 1 M2 Bench Mounted Swaging Machine
- 10 Sets, Straight Shank Rolls (Dies)
- 7 Sets, Ball Terminal Rolls (Dies)
- 4 Gauges, for all Ball and Shank Terminals
- 1 Auxiliary Adapter ,with bolt (P/N: M2-AA26)
- 1 Spring Clip Assembly (P/N: M2-SCA)
- 1 Guide Assembly Adjustable Stop (P/N: M2-GAAS)
- 1 Bench for mounting M2 Swaging Machine

Index No.	Loos Part No.	Old Part No.	Part Name	Qty.
1	M2 (84)	8-4	Roll Swaging Machine with Shipping Case/Bench, Wrench and Handle Extension	1
2	M2-B2	12548	Shank-Type Ball Terminal Roll Assembly (for 1/16-inch cable)	1
3	M2-B3	12548-1	Shank-Type Ball Terminal Roll Assembly (for 3/32-inch cable)	1
4	M2-B4	12548-2	Shank-Type Ball Terminal Roll Assembly (for 1/8-inch cable)	1
5	M2-B5	12548-3	Shank-Type Ball Terminal Roll Assembly (for 5/32-inch cable)	1
6	M2-B6	12548-4	Shank-Type Ball Terminal Roll Assembly (for 3/16-inch cable)	1
7	M2-B7	12548-5	Shank-Type Ball Terminal Roll Assembly (for 1/2-inch cable)	1
8	M2-B8	12548-6	Shank-Type Ball Terminal Roll Assembly (for 3/4-inch cable)	1
9	M2-S2	20438-2	Straight-Shank Terminal Roll Assembly (for 1/16-inch cable)	1
10	M2-S3	20438-3	Straight-Shank Terminal Roll Assembly (for 3/32-inch cable)	1
11	M2-S4	20438-4	Straight-Shank Terminal Roll Assembly (for 1/8-inch cable)	1
12	M2-S5	20438-5	Straight-Shank Terminal Roll Assembly (for 5/32-inch cable)	1
13	M2-S6	20438-6	Straight-Shank Terminal Roll Assembly (for 3/16-inch cable)	1
14	M2-S7	20438-7	Straight-Shank Terminal Roll Assembly (for 1/2-inch cable)	1
15	M2-S8	20438-8	Straight-Shank Terminal Roll Assembly (for 3/4-inch cable)	1
16	M2-S9	20438-9	Straight-Shank Terminal Roll Assembly (for 1/2-inch cable)	1
17	M2-S10	20438-10	Straight-Shank Terminal Roll Assembly (for 3/8-inch cable)	1
18	M2-S12	20438-12	Straight-Shank Terminal Roll Assembly (for 3/8-inch cable)	1
19	GA-S712	13329	Straight-Shank Terminal Gage (1/32 - 3/16-inch cable)	1
20	GA-S26	12971-2	Straight-Shank Terminal Gage (for 1/16-inch thru 3/16-inch cable)	1
21	GA-B24	12971-1	Ball Type Terminal Gage (for 1/16-inch thru 1/8-inch cable)	1
22	GA-B58	17692	Ball Type Terminal Gage (1/32 - 1/4-inch cable)	1
23	M2-SCA	17918	Spring Clip Assembly	1
24	M2-AA26	19837	Auxiliary Adapter with Bolt (for use with straight-shank terminal rolls 1/16-inch thru 3/16-inch)	1

ACCESSORIES FOR M2

Loos P/N	Old Kearny P/N	Description
84-81		Steel bench for mounting M2 Kearny Machine (Shipping Container)
M2-AA26	19837	Auxiliary Adapter (with bolt) for use with Straight Dies (1/16 through 3/16)
GA-B24	12971-1	Gauge for Ball Terminals 1/16, 3/32 & 1/8
GA-B58	17692	Gauge for Ball Terminals 5/32 through 1/4
GA-S26	12971-2	Gauge for Straight Shank Terminals 1/16 through 3/16
GA-S712	13329	Gauge for Straight Shank Terminals 7/32 through 3/8
M2-SCA	17918	Spring Clip Assembly
M2-GAAS		Guide Assembly Adjustable Stop
84-60		Guide Assembly
M2-PEK		Kit Electrical M2 (Replaces old style foot assembly)



84-81

We have also designed for the new Type II Swaging Machine, a new multi-purpose shipping container shown made of welded steel plate, with the object of assuring safe delivery of the machine to the customer and at the same time providing him with a sturdy bench on which to mount his swaging machine and a convenient storage cabinet for the dies and accessories.

Upon receipt of the shipping container/bench, the customer simply unbolts the machine, transfers it to the top, and, using the same bolts and the same holes, secures it in the operating position, as shown. Provision is made for the attachment of heavy duty lockable industrial casters at the corners of the lower frame to facilitate moving the machine around the shop.



LOCOLOC® BENCH MOUNTED POWERED SWAGING MACHINES

LOCOLOC® POWERED SWAGER , TYPE II Swager - M2-P

We also offer a power drive for optional application to the Type II Swaging Machine. This specially designed power drive consists of ;

- A) M2 Locoloc® Type II Swager
- B) 1.5 Horse Power Single Phase 115 Volt Motor , Type TEFC
- C) Right Angle Gear Reducer
- D) Foot Switch with 7.5 feet of cord connected to motor and 9 feet of cord for connection to power supply.
- E) 2 Chain Sprockets, Roller Chain and Adjustable Base to tighten chain.
- F) Chain Guard
- G) Steel base plate to which both the reduction gear housing and the swaging machine can be secured in their proper relative locations by cap screws.



Part No. M2-P POWERED SWAGING MACHINE only, without Dies or Accessories.

Unless otherwise specified in the customer's purchase order, power drive units will be shipped from the factory wired for 115 volts power supply and the 9 ft. 3-wire power supply cable will have a standard 3-prong plug (2 line and 1 ground) assembled to its free end.

Conforms to Mil Spec MIL-S-6180
Shipping Weight: 200 Lbs.

FACTORY INSTALLATION

If so ordered, the Power Drive will be shipped from the factory assembled to the Type II Swaging Machine, as shown at left.



Shipping container/bench with power driven machine inside ready for shipping.

In this case, the assembly of the Type II Swaging Machine and the Power Drive is attached to and enclosed in the lower half of the shipping container/bench and the dies and accessories are secured in the upper half. Here again, upon receipt at the customer's plant, the assembly of the Type II Swaging Machine and Power Drive is detached from the shipping container/bench, transferred to the bench surface, and secured there by inserting the shipping bolts into predrilled holes in the bench.

LOCOLOC® BENCH MOUNTED POWERED SWAGING MACHINES

LOCOLOC® POWERED DRIVE Kit for TYPE II Swager - M2-PDK

CUSTOMER INSTALLATION

If the customer wishes to convert a Type II manually operated Swaging Machine to power drive, he can obtain a Power Drive Kit and assemble it to the machine in his own shop. Detailed instructions for making this conversion are supplied with each kit.

M2-PDK LOCOLOC® POWERED Drive Kit for Type II Machines to CONVERT Manual Machines to ELECTRIC POWER Kit Contains:

- A) 12 x 19 Mounting Plate.
- B) Adjustable Base to Tighten Chain.
- C) Right Angle Gear Reducer including 1-1/2" HP Single Phase 115 volt motor.
- D) Foot Switch with 5 feet of cord connected to motor and 10 feet of cord for connection to power supply.
- E) Two Chain Sprockets and Roller Chain.
- F) Necessary cap screws to mount gear box, swager and guard.
- G) Chain Guard.



Power Drive Kit laid out.
Shipping Weight 140 lbs.

LOCOLOC® BENCH MOUNTED POWERED SWAGING MACHINE KIT - M2-PK

LOCOLOC® - Bench Mounting POWERED SWAGING MACHINE KIT, contains the following:

M2-P LOCOLOC® - Bench Mounted POWERED Swaging Machine

- 10 Sets, Straight Shank Rolls (Dies) to fit 1/16" through 3/8" Cable
- 7 Sets, Ball Terminal Rolls (Dies) to fit 1/16" through 1/4" Cable
- 4 Gauges, for all Ball and Shank Terminals
- 1 Auxilliary Adapter ,with bolt (M2-AA26)
- 1 Spring Clip Assembly (M2-SCA)
- 1 Guide Assembly Adjustable Stop (M2-GAAS)

Bench for Mounting Type II POWERED
LOCOLOC® - KEARNEY (M2-BENCH)



M2P-K* POWERED SWAGING
MACHINE KIT, with Dies and
Accessories.

(Shipping Weight 550 lbs.)

Conforms to Mil Spec MIL-S-6180
Shipping Weight: 550 Lbs.

QUALITY CONTROL

Loos & Co., Inc. operates a fully staffed Quality Control Department conforming to the requirements of ISO Q9001 .

S.P.C. procedures are employed as well as dimensional and non-destructive testing. Measuring instruments and gauge controls are in accordance with ISO Q9001 - 2000. Our personnel and procedures have undergone quality assurance inspections by most aerospace firms, as well as government agencies. These evaluations have always resulted in Loos & Co. receiving top ratings.

ATTENTION DISTRIBUTORS

Reproducible art work, "flyers" and "brochures" are available on all products listed in this catalog for your advertising use or for insertion in your catalogs. Advise us of products or pages of specific interest. Please request permission before reproducing this catalog or any part of same since it is copyrighted.

ATTENTION: LOCOLOC® -KEARNEY Machine Owners SUBJECT: WARRANTY RESTRICTION INFORMATION

Loos & Co. restricts the warranty on all Locoloc® - Kearney machines to the use of only Locoloc® fittings to fully guarantee the performance of our machines. We cannot be responsible for machine damage caused by another manufacturer's fittings that exceed Rockwell hardness of 62, A scale or RB100.

Obviously, there are certain fittings that will be swaged by Locoloc® - Kearney machines that we do not or cannot supply. When this occurs we request that you check the hardness of the fittings to determine that the maximum Rockwell hardness is 62, A scale, again, we cannot be responsible for machine damage caused by another manufacturer's fittings that exceed Rockwell hardness of 62, A scale or RB100.

CAUTION: WHEN SWAGING FITTINGS ONTO 1 x 19 CABLE

When swaging fittings on to 1 x 19 construction wire rope, remember that there is little or no compression remaining in this construction. The wire rope itself is very solid with little or no "give."

A combination of a 1 x 19 construction wire rope manufactured on the "high side" of its tolerance and a fitting with a hole running on the "low side" of its tolerance (see dimensions to fittings under specifications) will exaggerate this problem. Remember a swaging machine must have room to "flow" or "move" the steel in the fitting to form around the wire rope. There must be space to accomplish this.

In addition, many manufacturers do not drill the hole in their fittings deep enough. This leaves a space at the base of the fitting of solid steel. This distance can vary from 1/4" up to over 1". The Locoloc® - Kearney machine simply cannot perform the impossible and swage solid metal, again there must be room for the steel to "flow" or "move."

When any of the situations above occur, the result can only be broken dies, sprung machines, ruined fittings and perhaps loss of expensive wire rope. The majority of cases could easily be avoided by checking the following before attempting to swage:

- 1) Diameter of wire rope - is it on high side of tolerance?
- 2) Inside diameter of fitting - will the wire rope fit with ease?
- 3) Depth of hole in fitting - do not attempt to swage over solid steel, begin swage at the bottom of the hole.
- 4) Hardness of steel - check Rockwell Hardness. See above.
- 5) Do not add leverage to your swaging machine by extending the handle beyond the length of the handle extension we supply. The handle is designed to accomplish the maximum compression for which the machine is designed. Adding to the handle length will result in broken dies, broken gears, and/or sprung frames and large repair costs.

Table of Contents

Description	Page
Aluminum Oval Sleeves.....	13
Aluminum Oval Thin Wall Sleeves.....	14
Aluminum Stop Sleeves	13
AN 100 Thimbles , Cold Rolled Steel.....	10
AN 100 Thimbles , Stainless Steel	10
AN 111 Cable Bushings	9
Ball Fitting	3
Ball, Double Shank MS 20663	3
Ball, Single Shank MS 20664.....	3
Bench Mounted Cutters	24
Bench Swagers	30-35
Boeing Button.....	4
Clamps, Wire Rope, Galvanized.....	12
Clamps, Wire Rope, Stainless Steel	12
Clip Locking Turnbuckle.....	8
Clips , Net.....	11
Clips , Wire Rope.....	12
Copper Oval Sleeves	13
Copper, Zinc-Plated Oval Sleeves	13
Cutters , Bench Mounted	24
Cutters , Cable	21-26
Cylindrical Terminals	4
Dies , Swaging.....	30-35
Double Shank Ball, MS 20663.....	3
Eye End, MS 20668.....	5
Eye End, Strap, NAS 1435-E.....	4
Eye End Terminations	4-6,9
Eye, Marine.....	6
Fittings, Oval & Stop Sleeves	13
Fork End, MS 20667.....	5
Fork End, Strap NAS 1435-K.....	4
Fork End Terminals.....	4,5
Galvanized Wire Rope Clamps.....	12
Galvanized Wire Rope Clips.....	12
Galvanized Wire Rope Thimbles	10-11
Gauge, Cable Diameter.....	14
Gauge, Tension.....	27-28

Table of Contents

Description	Page
Hand Swagers	16-19
Hand Swaging Kits	31,32
Hand Wire Strippers and Cutters.....	17-19,21
Hydraulic Swagers.....	16,22
Kits , Hand Swaging.....	16, 23, 24
Locking-Clip, Turnbuckle ,MS 21256.....	6
Locking Wire, Safety.....	10
MS 20663, Double Shank Ball	3
MS 20664, Single Shank Ball	3
MS 20667, Fork End	5
MS 20668, Eye End.....	5
MS 21259, Stud.....	6
MS 21260, Stud.....	7
MS Fittings	3-9
MS Fittings , Clevis Pins	5
Machine, Swaging.....	15-20, 30-35
Marine Eye	6
NAS 1435-E, Strap Eye.....	4
NAS 1435-K, Strap Fork.....	4
Net Clip Tool.....	11
Net Clips.....	11
Oval Sleeves , Aluminum.....	13
Oval Sleeves , Copper	13
Oval Sleeves , Copper Zinc-Plated	13
Oval Sleeves , Stainless Steel.....	14
Pins , Clevis for MS Fittings.....	5
Pins , Cotter.....	4
Pneumatic Swagers	17
Powered Swaging Machines	19-20,30-35
Quality Assurance.....	36
Quality Policy	36
Safety Wire Pliers	24
Simplex® Wire-Cable Strippers & Cutters	29
Single Shank Ball, MS 20664.....	3
Sleeves ,Oval Aluminum.....	13
Sleeves ,Oval Copper	13
Sleeves ,Oval, Copper, Zinc-Plated	13
Sleeves , Stop Aluminum.....	13

Table of Contents

Description	Page
Sleeves , Stop Copper	11
Sleeves , Stainless Steel.....	14
Sleeves , Thin Wall Aluminum Oval	14
Stainless Steel, AN 100 Thimbles	10
Stainless Steel, Locking Wire.....	12
Stainless Steel, Oval Sleeves	14
Stainless Steel, Safety Wire	12
Stainless Steel, Thimbles AN 100.....	10
Stainless Steel, Thimbles Type 302/304.....	10
Stainless Steel, Wire Rope Clips	12
Stop Sleeves	13
Strap, Eye NAS 1435-E.....	4
Strap, Fork End NAS 1435-K.....	4
Strippers , Wire-Cable.....	29
Stud, AN 669.....	7
Stud,MS 21259.....	6
Stud,MS 21260.....	7
Swagers , Bench.....	16-17,30-35
Swagers ,Hand.....	15-20
Swagers , Hydraulic.....	18,25-26
Swagers , Pneumatic	17
Swaging Dies	30-35
Swaging, Electric Powered	30-35
Swaging, Machines.....	15-20, 30-35
Swaging Kits , Hand	17-18, 31-32,35
Tension Gauge	27-28
Terminals , Cylindrical	4
Terminals , Wire Rope	3-14
Terminations ,Oval and Stop Sleeves.....	13-14
Thimbles , AN 100 Cold Rolled Steel	10
Thimbles , AN 100 Stainless Steel	10



LOOS & CO. U Z H 1958-2013

CABLEWARE® DIVISION

901 Industrial Blvd. Naples, FL. 34104 , USA
Telephone: (239) 643-LOOS (5667) / Toll Free: 1-800-321-LOOS (5667)
Fax: (239) 643-4558 / E-mail: info@loosnaples.com
Website: www.loosnaples.com

55 Years of Progress

For your Wire Rope needs, contact:

WIRE ROPE DIVISION
Route 101
Po Box 98
Pomfret, CT 06258
Tel: (860) 928-7981
Fax: (860) 928-6167
Toll Free: 1-800-533-LOOS (5667)
E-mail: sales@loosco.com
www.loosco.com

For your Fiberoptics needs, contact:

FIBEROPTICS TECHNOLOGY, INC.
1 Quasset Road
Pomfret, CT 06258
Tel: (860) 928-0443
Fax: (860) 928-7664
Toll Free: 1-800-433-5248
E-mail: tbeeman@fiberoptix.com
www.fiberoptix.com

(Rev. 03.28.13)
MKT-CW-NPL